

## DATASHEET

# LRR52 Rabbit Polyclonal Antibody

CAT. NO. APA18871

### KEY FEATURES

Target	LRR52	Source / Host	Rabbit
Reactivity	Human	Clonality	Polyclonal
Applications	WB	Conjugation	Unconjugated
Form / Buffer	Liquid in 0.42% Potassium phosphate, 0.87% Sodium chloride, pH 7.3, 30% glycerol, and 0.01% sodium azide.		Storage at -20°C

### BACKGROUND

Auxiliary protein of the large-conductance, voltage and calcium-activated potassium channel (BK alpha). Modulates gating properties by producing a marked shift in the BK channel's voltage dependence of activation in the hyperpolarizing direction, and in the absence of calcium. KCNU1 channel auxiliary protein. Modulates KCNU1 gating properties.

### APPLICATION

To ensure optimal assay performance, AREX recommends conducting reagent titration tailored to each testing system for optimal detection results.

WB	1:500 - 1:1000
----	----------------

\*Results are sample-specific. Please refer to your local assay conditions and test parameters for reference.

### PRODUCT OVERVIEW

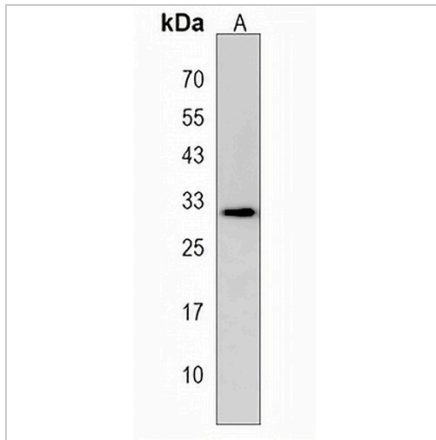
Description	Rabbit polyclonal antibody to LRR52
Specificity	Recognizes endogenous levels of LRR52 protein.
Antibody Type	Primary antibody
Immunogen	KLH-conjugated synthetic peptide encompassing a sequence within the C-terminal region of human LRR52. The exact sequence is proprietary.
Purification	The antibody was purified by immunogen affinity chromatography.
Molecular Weight	Predicted: 35 kD; Observed: 31 kD
Form/Buffer	Liquid in 0.42% Potassium phosphate, 0.87% Sodium chloride, pH 7.3, 30% glycerol, and 0.01% sodium azide.
Alternative Names	Leucine-rich repeat-containing protein 52; BK channel auxiliary gamma subunit LRR52
Gene Symbol	LRR52
Entrez Gene	440699(Human)
SwissProt	Q8N7C0(Human)

\*AREX continuously optimizes our products. Webpage content may not reflect the latest updates. For inquiries, please contact [info@arexbio.com](mailto:info@arexbio.com) or your local distributor.

\*Clone Number, Reactivity, Source/Host and Clonality can be found in the product name and Key Features section above.

**DATASHEET****LRRC52 Rabbit Polyclonal Antibody**

CAT. NO. APA18871

**DATA**

Western blot analysis of LRRC52 expression in T47D (A) whole cell lysates. (Predicted band size: 35 kD; Observed band size: 31 kD)

**STORAGE**

Store at 4°C short term. For long term storage, store at -20°C, avoiding freeze/thaw cycles.

**NOTE**

For Research Use Only. Not for diagnostic, therapeutics, prophylactic or in vivo use.