

DATASHEET

Adenylate Cyclase 10 Rabbit Polyclonal Antibody

CAT. NO. APA18873

KEY FEATURES

Target	Adenylate Cyclase 10	Source / Host	Rabbit
Reactivity	Human	Clonality	Polyclonal
Applications	WB, FC	Conjugation	Unconjugated
Form / Buffer	Liquid in 0.42% Potassium phosphate, 0.87% Sodium chloride, pH 7.3, 30% glycerol, and 0.01% sodium azide.		Storage at -20°C

BACKGROUND

Catalyzes the formation of the signaling molecule cAMP . May function as sensor that mediates responses to changes in cellular bicarbonate and CO(2) levels . Has a critical role in mammalian spermatogenesis by producing the cAMP which regulates cAMP-responsive nuclear factors indispensable for sperm maturation in the epididymis. Induces capacitation, the maturational process that sperm undergo prior to fertilization . Involved in ciliary beat regulation .

APPLICATION

To ensure optimal assay performance, AREX recommends conducting reagent titration tailored to each testing system for optimal detection results.

WB	1:500 - 1:1000
FC	1:10 - 1:50

*Results are sample-specific. Please refer to your local assay conditions and test parameters for reference.

PRODUCT OVERVIEW

Description	Rabbit polyclonal antibody to Adenylate Cyclase 10
Specificity	Recognizes endogenous levels of Adenylate Cyclase 10 protein.
Antibody Type	Primary antibody
Immunogen	KLH-conjugated synthetic peptide encompassing a sequence within the Central region of human Adenylate Cyclase 10. The exact sequence is proprietary.
Purification	The antibody was purified by immunogen affinity chromatography.
Molecular Weight	Predicted: 187 kD; Observed: 187 kD
Form/Buffer	Liquid in 0.42% Potassium phosphate, 0.87% Sodium chloride, pH 7.3, 30% glycerol, and 0.01% sodium azide.
Alternative Names	SAC; Adenylate cyclase type 10; AH-related protein; Adenylate cyclase homolog; Germ cell soluble adenylyl cyclase; hsAC; sAC; Testicular soluble adenylyl cyclase
Gene Symbol	ADCY10
Entrez Gene	55811(Human)
SwissProt	Q96PN6(Human)

*AREX continuously optimizes our products. Webpage content may not reflect the latest updates. For inquiries, please contact info@arexbio.com or your local distributor.

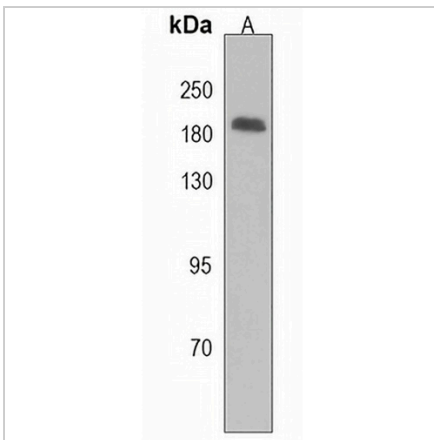
*Clone Number, Reactivity, Source/Host and Clonality can be found in the product name and Key Features section above.

DATASHEET

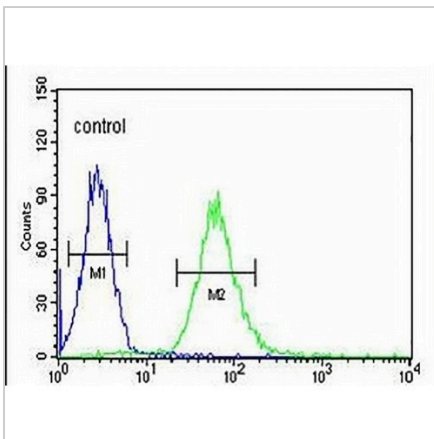
Adenylate Cyclase 10 Rabbit Polyclonal Antibody

CAT. NO. APA18873

DATA



Western blot analysis of Adenylate Cyclase 10 expression in K562 (A) whole cell lysates. (Predicted band size: 187 kD; Observed band size: 187 kD)



Flow cytometric analysis of K562 cells using Anti-Adenylate Cyclase 10 Antibody. The cells were fixed with 2% paraformaldehyde (10 min) and then permeabilized with 90% methanol for 10 min. The cells were incubated in 2% bovine serum albumin to block non-specific protein-protein interactions followed by the antibody at 37 °C for 60 min. The secondary antibody Goat Anti-Rabbit IgG (H&L) - AREX® Fluor 488 was incubated at 37 °C for 40 min. Isotype control antibody (blue line) was used under the same condition.

STORAGE

Store at 4°C short term. For long term storage, store at -20°C, avoiding freeze/thaw cycles.

NOTE

For Research Use Only. Not for diagnostic, therapeutics, prophylactic or in vivo use.