

DATASHEET

MMP24 Rabbit Polyclonal Antibody

CAT. NO. APA18889

KEY FEATURES

| | | | |
|---------------|---|---------------|---------------------|
| Target | MMP24 | Source / Host | Rabbit |
| Reactivity | Human | Clonality | Polyclonal |
| Applications | WB, IHC | Conjugation | Unconjugated |
| Form / Buffer | Liquid in 0.42% Potassium phosphate, 0.87% Sodium chloride, pH 7.3, 30% glycerol, and 0.01% sodium azide. | | Storage at -20°C |

BACKGROUND

Metalloprotease that mediates cleavage of N-cadherin (CDH2) and acts as a regulator of neuro-immune interactions and neural stem cell quiescence. Involved in cell-cell interactions between nociceptive neurites and mast cells, possibly by mediating cleavage of CDH2, thereby acting as a mediator of peripheral thermal nociception and inflammatory hyperalgesia. Key regulator of neural stem cells quiescence by mediating cleavage of CDH2, affecting CDH2-mediated anchorage of neural stem cells to ependymocytes in the adult subependymal zone, leading to modulate their quiescence. May play a role in axonal growth. Able to activate progelatinase A. May also be a proteoglycanase involved in degradation of proteoglycans, such as dermatan sulfate and chondroitin sulfate proteoglycans.

APPLICATION

To ensure optimal assay performance, AREX recommends conducting reagent titration tailored to each testing system for optimal detection results.

| | |
|-----|----------------|
| WB | 1:500 - 1:1000 |
| IHC | 1:50 - 1:200 |

*Results are sample-specific. Please refer to your local assay conditions and test parameters for reference.

PRODUCT OVERVIEW

| | |
|-------------------|--|
| Description | Rabbit polyclonal antibody to MMP24 |
| Specificity | Recognizes endogenous levels of MMP24 protein. |
| Antibody Type | Primary antibody |
| Immunogen | KLH-conjugated synthetic peptide encompassing a sequence within the Central region of human MMP24. The exact sequence is proprietary. |
| Purification | The antibody was purified by immunogen affinity chromatography. |
| Molecular Weight | Predicted: 73 kD; Observed: 73 kD |
| Form/Buffer | Liquid in 0.42% Potassium phosphate, 0.87% Sodium chloride, pH 7.3, 30% glycerol, and 0.01% sodium azide. |
| Alternative Names | MT5MMP; Matrix metalloproteinase-24; MMP-24; Membrane-type matrix metalloproteinase 5; MT-MMP 5; MTMMP5; Membrane-type-5 matrix metalloproteinase; MT5-MMP; MT5MMP |
| Gene Symbol | MMP24 |
| Entrez Gene | 10893(Human) |
| SwissProt | Q9Y5R2(Human) |

*AREX continuously optimizes our products. Webpage content may not reflect the latest updates. For inquiries, please contact info@arexbio.com or your local distributor.

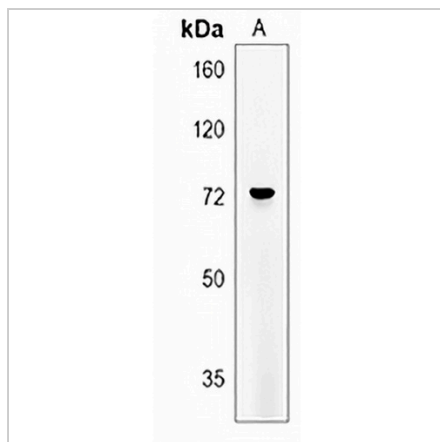
*Clone Number, Reactivity, Source/Host and Clonality can be found in the product name and Key Features section above.

DATASHEET

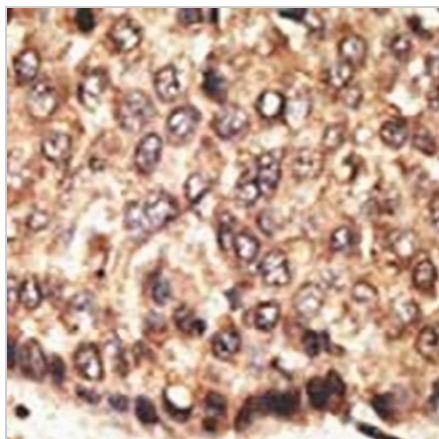
MMP24 Rabbit Polyclonal Antibody

CAT. NO. APA18889

DATA



Western blot analysis of MMP24 expression in HL60 (A) whole cell lysates. (Predicted band size: 73 kD; Observed band size: 73 kD)



Immunohistochemical analysis of MMP24 staining in human hepatocarcinoma formalin fixed paraffin embedded tissue section. The section was pre-treated using heat mediated antigen retrieval with sodium citrate buffer (pH 6.0). The section was then incubated with the antibody at room temperature and detected using an HRP conjugated compact polymer system. DAB was used as the chromogen. The section was then counterstained with haematoxylin and mounted with DPX.

STORAGE

Store at 4°C short term. For long term storage, store at -20°C, avoiding freeze/thaw cycles.

NOTE

For Research Use Only. Not for diagnostic, therapeutics, prophylactic or in vivo use.