

DATASHEET

ESPN Rabbit Polyclonal Antibody

CAT. NO. APA18917

KEY FEATURES

Target	ESPN	Source / Host	Rabbit
Reactivity	Human	Clonality	Polyclonal
Applications	WB, IHC, FC	Conjugation	Unconjugated
Form / Buffer	Liquid in 0.42% Potassium phosphate, 0.87% Sodium chloride, pH 7.3, 30% glycerol, and 0.01% sodium azide.		Storage at -20°C

BACKGROUND

Multifunctional actin-bundling protein. Plays a major role in regulating the organization, dimension, dynamics and signaling capacities of the actin filament-rich microvilli in the mechanosensory and chemosensory cells . Required for the assembly and stabilization of the stereociliary parallel actin bundles. Plays a crucial role in the formation and maintenance of inner ear hair cell stereocilia . Involved in the elongation of actin in stereocilia . In extrastriolar hair cells, required for targeting MYO3B to stereocilia tips, and for regulation of stereocilia diameter and staircase formation.

APPLICATION

To ensure optimal assay performance, AREX recommends conducting reagent titration tailored to each testing system for optimal detection results.

WB	1:500 - 1:1000
IHC	1:50 - 1:200
FC	1:10 - 1:50

*Results are sample-specific. Please refer to your local assay conditions and test parameters for reference.

PRODUCT OVERVIEW

Description	Rabbit polyclonal antibody to ESPN
Specificity	Recognizes endogenous levels of ESPN protein.
Antibody Type	Primary antibody
Immunogen	KLH-conjugated synthetic peptide encompassing a sequence within the N-terminal region of human ESPN. The exact sequence is proprietary.
Purification	The antibody was purified by immunogen affinity chromatography.
Molecular Weight	Predicted: 91 kD; Observed: 110 kD
Form/Buffer	Liquid in 0.42% Potassium phosphate, 0.87% Sodium chloride, pH 7.3, 30% glycerol, and 0.01% sodium azide.
Alternative Names	DFNB36; Espin; Autosomal recessive deafness type 36 protein; Ectoplasmic specialization protein
Gene Symbol	ESPN
Entrez Gene	83715(Human)
SwissProt	B1AK53(Human)

*AREX continuously optimizes our products. Webpage content may not reflect the latest updates. For inquiries, please contact info@arexbio.com or your local distributor.

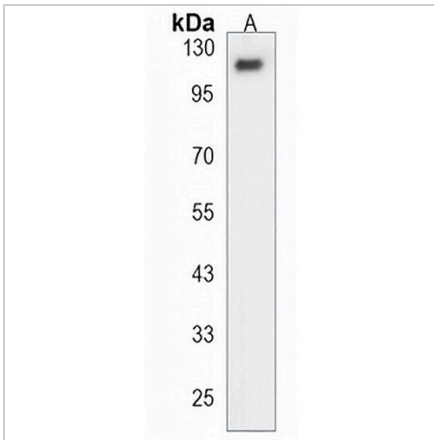
*Clone Number, Reactivity, Source/Host and Clonality can be found in the product name and Key Features section above.

DATASHEET

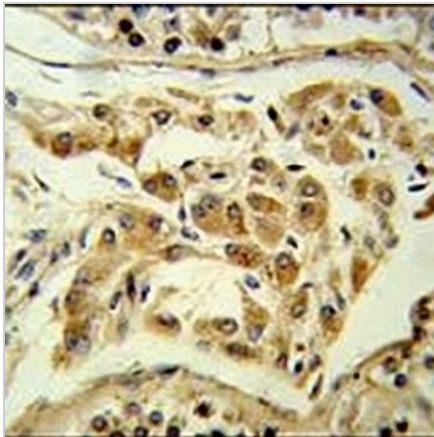
ESPN Rabbit Polyclonal Antibody

CAT. NO. APA18917

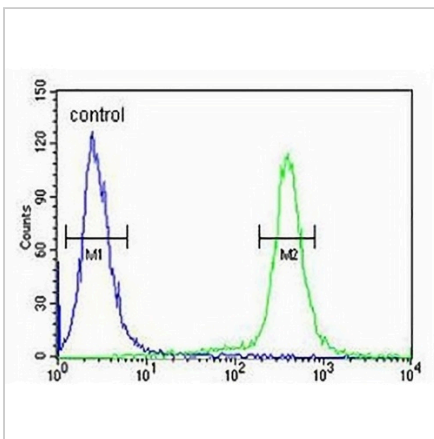
DATA



Western blot analysis of ESPN expression in SKBR3 (A) whole cell lysates. (Predicted band size: 91 kD; Observed band size: 110 kD)



Immunohistochemical analysis of ESPN staining in human testis formalin fixed paraffin embedded tissue section. The section was pre-treated using heat mediated antigen retrieval with sodium citrate buffer (pH 6.0). The section was then incubated with the antibody at room temperature and detected using an HRP conjugated compact polymer system. DAB was used as the chromogen. The section was then counterstained with haematoxylin and mounted with DPX.



Flow cytometric analysis of 293 cells using Anti-ESPN Antibody. The cells were fixed with 2% paraformaldehyde (10 min) and then permeabilized with 90% methanol for 10 min. The cells were incubated in 2% bovine serum albumin to block non-specific protein-protein interactions followed by the antibody at 37 °C for 60 min. The secondary antibody Goat Anti-Rabbit IgG (H&L) - AREX® Fluor 488 was incubated at 37 °C for 40 min. Isotype control antibody (blue line) was used under the same condition.

STORAGE

Store at 4°C short term. For long term storage, store at -20°C, avoiding freeze/thaw cycles.

NOTE

For Research Use Only. Not for diagnostic, therapeutics, prophylactic or in vivo use.