

## DATASHEET

# DIO1 Rabbit Polyclonal Antibody

CAT. NO. APA18924

### KEY FEATURES

Target	DIO1	Source / Host	Rabbit
Reactivity	Human	Clonality	Polyclonal
Applications	WB	Conjugation	Unconjugated
Form / Buffer	Liquid in 0.42% Potassium phosphate, 0.87% Sodium chloride, pH 7.3, 30% glycerol, and 0.01% sodium azide.		Storage at -20°C

### BACKGROUND

Plays a crucial role in the metabolism of thyroid hormones (TH) and has specific roles in TH activation and inactivation by deiodination and has specific roles in TH activation and inactivation by deiodination . Catalyzes the deiodination of L-thyroxine (T4) to 3,5,3'-triiodothyronine (T3), 3,3',5'-triiodothyronine (rT3) to 3,3'-diiodothyronine (3,3'-T2) and 3',5'-diiodothyronine (3',5'-T2) to 3'-monoiodothyronine (3'-T1) via outer-ring deiodination (ORD) . Catalyzes the deiodination of T4 to 3,3',5'-triiodothyronine (rT3) via inner-ring deiodination (IRD) . Catalyzes the deiodination of T3 to 3,3'-T2, 3,5'-diiodothyronine (3,5-T2) to 3-monoiodothyronine (3-T1) and 3,3'-T2 to 3-T1 via IRD .

### APPLICATION

To ensure optimal assay performance, AREX recommends conducting reagent titration tailored to each testing system for optimal detection results.

WB	1:500 - 1:1000
----	----------------

\*Results are sample-specific. Please refer to your local assay conditions and test parameters for reference.

### PRODUCT OVERVIEW

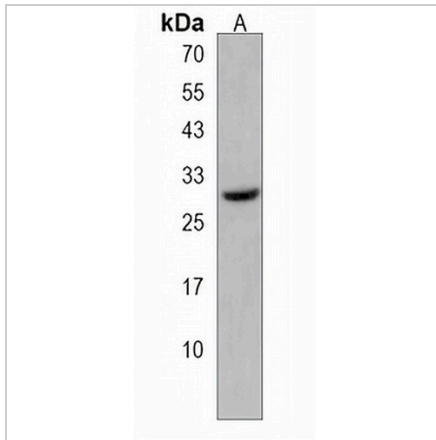
Description	Rabbit polyclonal antibody to DIO1
Specificity	Recognizes endogenous levels of DIO1 protein.
Antibody Type	Primary antibody
Immunogen	KLH-conjugated synthetic peptide encompassing a sequence within the N-terminal region of human DIO1. The exact sequence is proprietary.
Purification	The antibody was purified by immunogen affinity chromatography.
Molecular Weight	Predicted: 28 kD; Observed: 29 kD
Form/Buffer	Liquid in 0.42% Potassium phosphate, 0.87% Sodium chloride, pH 7.3, 30% glycerol, and 0.01% sodium azide.
Alternative Names	ITDI1; TXDI1; Type I iodothyronine deiodinase; 5DI; DIOI; Type 1 DI; Type-I 5'-deiodinase
Gene Symbol	DIO1
Entrez Gene	1733(Human)
SwissProt	P49895(Human)

\*AREX continuously optimizes our products. Webpage content may not reflect the latest updates. For inquiries, please contact [info@arexbio.com](mailto:info@arexbio.com) or your local distributor.

\*Clone Number, Reactivity, Source/Host and Clonality can be found in the product name and Key Features section above.

**DATASHEET****DIO1 Rabbit Polyclonal Antibody**

CAT. NO. APA18924

**DATA**

Western blot analysis of DIO1 expression in human kidney (A) whole cell lysates.  
(Predicted band size: 28 kD; Observed band size: 29 kD)

**STORAGE**

Store at 4°C short term. For long term storage, store at -20°C, avoiding freeze/thaw cycles.

**NOTE**

For Research Use Only. Not for diagnostic, therapeutics, prophylactic or in vivo use.