

**DATASHEET**

**RIOK1 Rabbit Polyclonal Antibody**

CAT. NO. APA18935

**KEY FEATURES**

Target	RIOK1	Source / Host	Rabbit
Reactivity	Human	Clonality	Polyclonal
Applications	WB, IHC	Conjugation	Unconjugated
Form / Buffer	Liquid in 0.42% Potassium phosphate, 0.87% Sodium chloride, pH 7.3, 30% glycerol, and 0.01% sodium azide.		Storage at -20°C

**BACKGROUND**

Involved in the final steps of cytoplasmic maturation of the 40S ribosomal subunit. Involved in processing of 18S-E pre-rRNA to the mature 18S rRNA. Required for the recycling of NOB1 and PNO1 from the late 40S precursor. The association with the very late 40S subunit intermediate may involve a translation-like checkpoint point cycle preceding the binding to the 60S ribosomal subunit. Despite the protein kinase domain is proposed to act predominantly as an ATPase. The catalytic activity regulates its dynamic association with the 40S subunit. In addition to its role in ribosomal biogenesis acts as an adapter protein by recruiting NCL/nucleolin to the PRMT5 complex for its symmetrical methylation.

**APPLICATION**

To ensure optimal assay performance, AREX recommends conducting reagent titration tailored to each testing system for optimal detection results.

WB	1:500 - 1:1000
IHC	1:50 - 1:200

\*Results are sample-specific. Please refer to your local assay conditions and test parameters for reference.

**PRODUCT OVERVIEW**

Description	Rabbit polyclonal antibody to RIOK1
Specificity	Recognizes endogenous levels of RIOK1 protein.
Antibody Type	Primary antibody
Immunogen	KLH-conjugated synthetic peptide encompassing a sequence within the N-terminal region of human RIOK1. The exact sequence is proprietary.
Purification	The antibody was purified by immunogen affinity chromatography.
Molecular Weight	Predicted: 65 kD; Observed: 63 kD
Form/Buffer	Liquid in 0.42% Potassium phosphate, 0.87% Sodium chloride, pH 7.3, 30% glycerol, and 0.01% sodium azide.
Alternative Names	Serine/threonine-protein kinase RIO1; RIO kinase 1
Gene Symbol	RIOK1
Entrez Gene	83732(Human)
SwissProt	Q9BRS2(Human)

\*AREX continuously optimizes our products. Webpage content may not reflect the latest updates. For inquiries, please contact [info@arexbio.com](mailto:info@arexbio.com) or your local distributor.

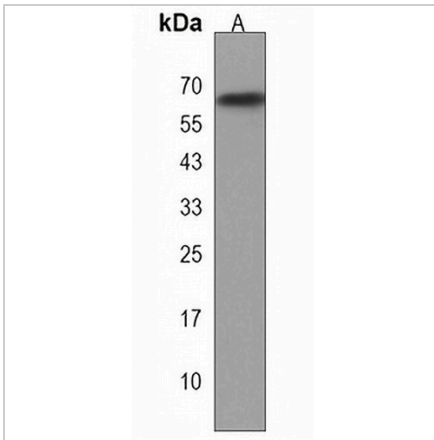
\*Clone Number, Reactivity, Source/Host and Clonality can be found in the product name and Key Features section above.

**DATASHEET**

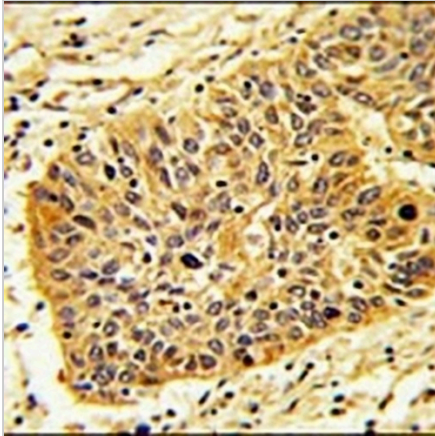
**RIOK1 Rabbit Polyclonal Antibody**

CAT. NO. APA18935

**DATA**



Western blot analysis of RIOK1 expression in K562 (A) whole cell lysates. (Predicted band size: 65 kD; Observed band size: 63 kD)



Immunohistochemical analysis of RIOK1 staining in human lung carcinoma formalin fixed paraffin embedded tissue section. The section was pre-treated using heat mediated antigen retrieval with sodium citrate buffer (pH 6.0). The section was then incubated with the antibody at room temperature and detected using an HRP conjugated compact polymer system. DAB was used as the chromogen. The section was then counterstained with haematoxylin and mounted with DPX.

**STORAGE**

Store at 4°C short term. For long term storage, store at -20°C, avoiding freeze/thaw cycles.

**NOTE**

For Research Use Only. Not for diagnostic, therapeutics, prophylactic or in vivo use.