

DATASHEET

HMX2 Rabbit Polyclonal Antibody

CAT. NO. APA18939

KEY FEATURES

Target	HMX2	Source / Host	Rabbit
Reactivity	Mouse	Clonality	Polyclonal
Applications	WB	Conjugation	Unconjugated
Form / Buffer	Liquid in 0.42% Potassium phosphate, 0.87% Sodium chloride, pH 7.3, 30% glycerol, and 0.01% sodium azide.		Storage at -20°C

BACKGROUND

The protein encoded by this gene is a member of the NKL homeobox family of transcription factors. Members in this family are of ancient origin and play an important role in organ development during embryogenesis. A related mouse protein plays a role in patterning of inner ear structures. In humans, variations in a region containing this gene have been associated with inner ear malformations, vestibular dysfunction, and hearing loss.

APPLICATION

To ensure optimal assay performance, AREX recommends conducting reagent titration tailored to each testing system for optimal detection results.

WB	1:500 - 1:1000
----	----------------

*Results are sample-specific. Please refer to your local assay conditions and test parameters for reference.

PRODUCT OVERVIEW

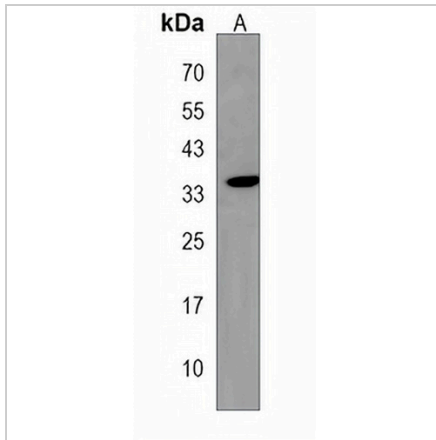
Description	Rabbit polyclonal antibody to HMX2
Specificity	Recognizes endogenous levels of HMX2 protein.
Antibody Type	Primary antibody
Immunogen	KLH-conjugated synthetic peptide encompassing a sequence within the Central region of human HMX2. The exact sequence is proprietary.
Purification	The antibody was purified by immunogen affinity chromatography.
Molecular Weight	Predicted: 29 kD; Observed: 35 kD
Form/Buffer	Liquid in 0.42% Potassium phosphate, 0.87% Sodium chloride, pH 7.3, 30% glycerol, and 0.01% sodium azide.
Alternative Names	Homeobox protein HMX2; Homeobox protein H6 family member 2
Gene Symbol	HMX2
Entrez Gene	15372(Mouse)
SwissProt	P43687(Mouse)

*AREX continuously optimizes our products. Webpage content may not reflect the latest updates. For inquiries, please contact info@arexbio.com or your local distributor.

*Clone Number, Reactivity, Source/Host and Clonality can be found in the product name and Key Features section above.

DATASHEET**HMX2 Rabbit Polyclonal Antibody**

CAT. NO. APA18939

DATA

Western blot analysis of HMX2 expression in mouse liver (A) whole cell lysates. (Predicted band size: 29 kD; Observed band size: 35 kD)

STORAGE

Store at 4°C short term. For long term storage, store at -20°C, avoiding freeze/thaw cycles.

NOTE

For Research Use Only. Not for diagnostic, therapeutics, prophylactic or in vivo use.