

**DATASHEET**

**BTBD1 Rabbit Polyclonal Antibody**

CAT. NO. APA18943

**KEY FEATURES**

Target	BTBD1	Source / Host	Rabbit
Reactivity	Human, Mouse	Clonality	Polyclonal
Applications	WB, FC	Conjugation	Unconjugated
Form / Buffer	Liquid in 0.42% Potassium phosphate, 0.87% Sodium chloride, pH 7.3, 30% glycerol, and 0.01% sodium azide.		Storage at -20°C

**BACKGROUND**

Probable substrate-specific adapter of an E3 ubiquitin-protein ligase complex which mediates the ubiquitination and subsequent proteasomal degradation of target proteins . Seems to regulate expression levels and/or subnuclear distribution of TOP1, via an unknown mechanism . May play a role in mesenchymal differentiation where it promotes myogenic differentiation and suppresses adipogenesis .

**APPLICATION**

To ensure optimal assay performance, AREX recommends conducting reagent titration tailored to each testing system for optimal detection results.

WB	1:500 - 1:1000
FC	1:10 - 1:50

\*Results are sample-specific. Please refer to your local assay conditions and test parameters for reference.

**PRODUCT OVERVIEW**

Description	Rabbit polyclonal antibody to BTBD1
Specificity	Recognizes endogenous levels of BTBD1 protein.
Antibody Type	Primary antibody
Immunogen	KLH-conjugated synthetic peptide encompassing a sequence within the Central region of human BTBD1. The exact sequence is proprietary.
Purification	The antibody was purified by immunogen affinity chromatography.
Molecular Weight	Predicted: 52 kD; Observed: 55 kD
Form/Buffer	Liquid in 0.42% Potassium phosphate, 0.87% Sodium chloride, pH 7.3, 30% glycerol, and 0.01% sodium azide.
Alternative Names	C15orf1; NS5ATP8; BTB/POZ domain-containing protein 1; Hepatitis C virus NS5A-transactivated protein 8; HCV NS5A-transactivated protein 8
Gene Symbol	BTBD1
Entrez Gene	53339(Human); 83962(Mouse)
SwissProt	Q9H0C5(Human); P58544(Mouse)

\*AREX continuously optimizes our products. Webpage content may not reflect the latest updates. For inquiries, please contact [info@arexbio.com](mailto:info@arexbio.com) or your local distributor.

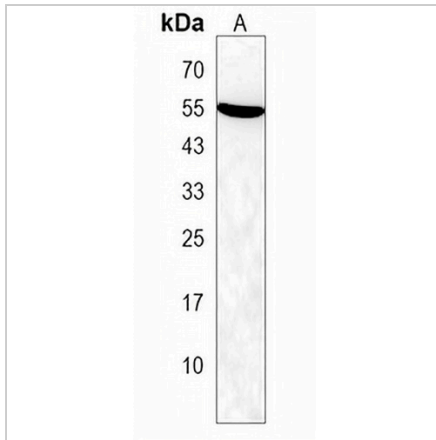
\*Clone Number, Reactivity, Source/Host and Clonality can be found in the product name and Key Features section above.

**DATASHEET**

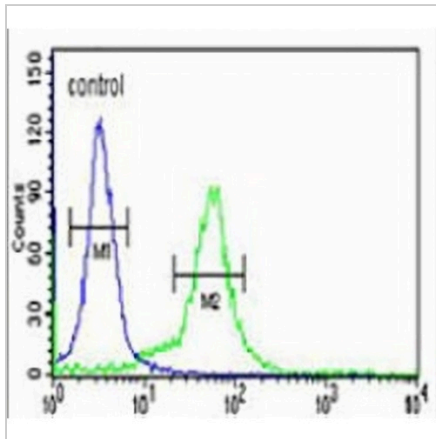
**BTBD1 Rabbit Polyclonal Antibody**

CAT. NO. APA18943

**DATA**



Western blot analysis of BTBD1 expression in 293 (A) whole cell lysates. (Predicted band size: 52 kD; Observed band size: 55 kD)



Flow cytometric analysis of 293 cells using Anti-BTBD1 Antibody. The cells were fixed with 2% paraformaldehyde (10 min) and then permeabilized with 90% methanol for 10 min. The cells were incubated in 2% bovine serum albumin to block non-specific protein-protein interactions followed by the antibody at 37 °C for 60 min. The secondary antibody Goat Anti-Rabbit IgG (H&L) - AREX® Fluor 488 was incubated at 37 °C for 40 min. Isotype control antibody (blue line) was used under the same condition.

**STORAGE**

Store at 4°C short term. For long term storage, store at -20°C, avoiding freeze/thaw cycles.

**NOTE**

For Research Use Only. Not for diagnostic, therapeutics, prophylactic or in vivo use.