

## DATASHEET

# FKBP9 Rabbit Polyclonal Antibody

CAT. NO. APA18945

### KEY FEATURES

|               |                                                                                                           |               |                     |
|---------------|-----------------------------------------------------------------------------------------------------------|---------------|---------------------|
| Target        | FKBP9                                                                                                     | Source / Host | Rabbit              |
| Reactivity    | Human, Mouse                                                                                              | Clonality     | Polyclonal          |
| Applications  | WB, IHC, FC                                                                                               | Conjugation   | Unconjugated        |
| Form / Buffer | Liquid in 0.42% Potassium phosphate, 0.87% Sodium chloride, pH 7.3, 30% glycerol, and 0.01% sodium azide. |               | Storage<br>at -20°C |

### BACKGROUND

PPIases accelerate the folding of proteins during protein synthesis.

### APPLICATION

To ensure optimal assay performance, AREX recommends conducting reagent titration tailored to each testing system for optimal detection results.

|     |                |
|-----|----------------|
| WB  | 1:500 - 1:1000 |
| IHC | 1:50 - 1:200   |
| FC  | 1:10 - 1:50    |

\*Results are sample-specific. Please refer to your local assay conditions and test parameters for reference.

### PRODUCT OVERVIEW

|                   |                                                                                                                                                                        |
|-------------------|------------------------------------------------------------------------------------------------------------------------------------------------------------------------|
| Description       | Rabbit polyclonal antibody to FKBP9                                                                                                                                    |
| Specificity       | Recognizes endogenous levels of FKBP9 protein.                                                                                                                         |
| Antibody Type     | Primary antibody                                                                                                                                                       |
| Immunogen         | KLH-conjugated synthetic peptide encompassing a sequence within the N-terminal region of human FKBP9. The exact sequence is proprietary.                               |
| Purification      | The antibody was purified by immunogen affinity chromatography.                                                                                                        |
| Molecular Weight  | Predicted: 63 kD; Observed: 55 kD                                                                                                                                      |
| Form/Buffer       | Liquid in 0.42% Potassium phosphate, 0.87% Sodium chloride, pH 7.3, 30% glycerol, and 0.01% sodium azide.                                                              |
| Alternative Names | FKBP60; FKBP63; Peptidyl-prolyl cis-trans isomerase FKBP9; PPIase FKBP9; 63 kDa FK506-binding protein; 63 kDa FKBP; FKBP-63; FK506-binding protein 9; FKBP-9; Rotamase |
| Gene Symbol       | FKBP9                                                                                                                                                                  |
| Entrez Gene       | 11328(Human); 27055(Mouse)                                                                                                                                             |
| SwissProt         | O95302(Human); Q9Z247(Mouse)                                                                                                                                           |

\*AREX continuously optimizes our products. Webpage content may not reflect the latest updates. For inquiries, please contact [info@arexbio.com](mailto:info@arexbio.com) or your local distributor.

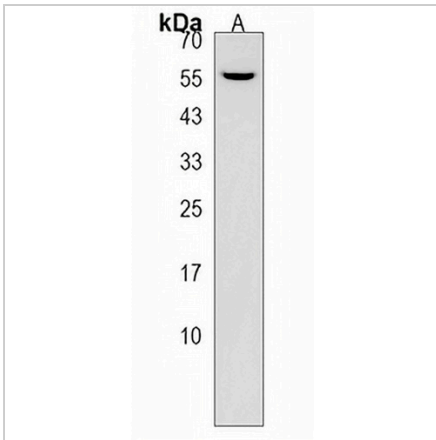
\*Clone Number, Reactivity, Source/Host and Clonality can be found in the product name and Key Features section above.

**DATASHEET**

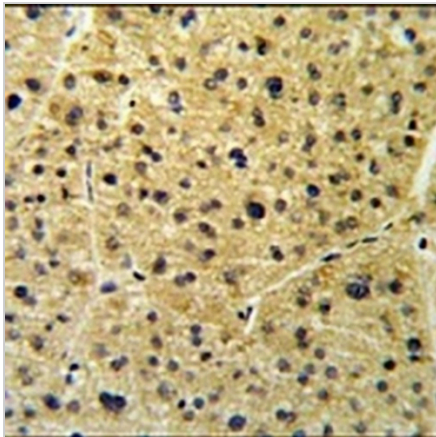
**FKBP9 Rabbit Polyclonal Antibody**

CAT. NO. APA18945

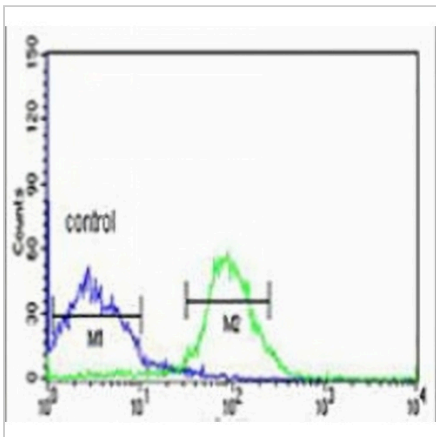
**DATA**



Western blot analysis of FKBP9 expression in mouse kidney (A) whole cell lysates. (Predicted band size: 63 kD; Observed band size: 55 kD)



Immunohistochemical analysis of FKBP9 staining in human hepatocarcinoma formalin fixed paraffin embedded tissue section. The section was pre-treated using heat mediated antigen retrieval with sodium citrate buffer (pH 6.0). The section was then incubated with the antibody at room temperature and detected using an HRP conjugated compact polymer system. DAB was used as the chromogen. The section was then counterstained with haematoxylin and mounted with DPX.



Flow cytometric analysis of NCIH460 cells using Anti-FKBP9 Antibody. The cells were fixed with 2% paraformaldehyde (10 min) and then permeabilized with 90% methanol for 10 min. The cells were incubated in 2% bovine serum albumin to block non-specific protein-protein interactions followed by the antibody at 37 °C for 60 min. The secondary antibody Goat Anti-Rabbit IgG (H&L) - AREX® Fluor 488 was incubated at 37 °C for 40 min. Isotype control antibody (blue line) was used under the same condition.

**STORAGE**

Store at 4°C short term. For long term storage, store at -20°C, avoiding freeze/thaw cycles.

**NOTE**

For Research Use Only. Not for diagnostic, therapeutics, prophylactic or in vivo use.