

DATASHEET

DDX53 Rabbit Polyclonal Antibody

CAT. NO. APA18954

KEY FEATURES

Target	DDX53	Source / Host	Rabbit
Reactivity	Human	Clonality	Polyclonal
Applications	WB, FC	Conjugation	Unconjugated
Form / Buffer	Liquid in 0.42% Potassium phosphate, 0.87% Sodium chloride, pH 7.3, 30% glycerol, and 0.01% sodium azide.		Storage at-20°C

BACKGROUND

This intronless gene encodes a protein which contains several domains found in members of the DEAD-box helicase protein family. Other members of this protein family participate in ATP-dependent RNA unwinding.

APPLICATION

To ensure optimal assay performance, AREX recommends conducting reagent titration tailored to each testing system for optimal detection results.

WB	1:500 - 1:1000
FC	1:10 - 1:50

*Results are sample-specific. Please refer to your local assay conditions and test parameters for reference.

PRODUCT OVERVIEW

Description	Rabbit polyclonal antibody to DDX53
Specificity	Recognizes endogenous levels of DDX53 protein.
Antibody Type	Primary antibody
Immunogen	KLH-conjugated synthetic peptide encompassing a sequence within the C-terminal region of human DDX53. The exact sequence is proprietary.
Purification	The antibody was purified by immunogen affinity chromatography.
Molecular Weight	Predicted: 71 kD; Observed: 71 kD
Form/Buffer	Liquid in 0.42% Potassium phosphate, 0.87% Sodium chloride, pH 7.3, 30% glycerol, and 0.01% sodium azide.
Alternative Names	CAGE; Probable ATP-dependent RNA helicase DDX53; Cancer-associated gene protein; Cancer/testis antigen 26; CT26; DEAD box protein 53; DEAD box protein CAGE
Gene Symbol	DDX53
Entrez Gene	168400(Human)
SwissProt	Q86TM3(Human)

*AREX continuously optimizes our products. Webpage content may not reflect the latest updates. For inquiries, please contact info@arexbio.com or your local distributor.

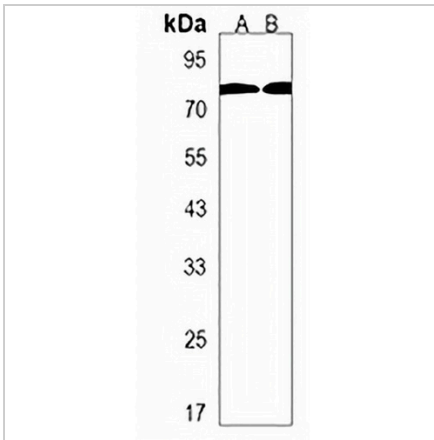
*Clone Number, Reactivity, Source/Host and Clonality can be found in the product name and Key Features section above.

DATASHEET

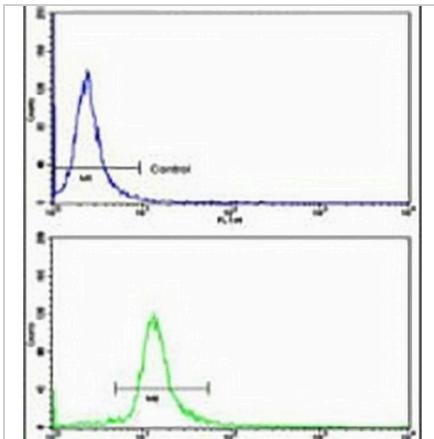
DDX53 Rabbit Polyclonal Antibody

CAT. NO. APA18954

DATA



Western blot analysis of DDX53 expression in DU145 (A), RL952 (B) whole cell lysates. (Predicted band size: 71 kD; Observed band size: 71 kD)



Flow cytometric analysis of WiDr cells using Anti-DDX53 Antibody. The cells were fixed with 2% paraformaldehyde (10 min) and then permeabilized with 90% methanol for 10 min. The cells were incubated in 2% bovine serum albumin to block non-specific protein-protein interactions followed by the antibody at 37 °C for 60 min. The secondary antibody Goat Anti-Rabbit IgG (H&L) - AREX® Fluor 488 was incubated at 37 °C for 40 min. Isotype control antibody (blue line) was used under the same condition.

STORAGE

Store at 4°C short term. For long term storage, store at -20°C, avoiding freeze/thaw cycles.

NOTE

For Research Use Only. Not for diagnostic, therapeutics, prophylactic or in vivo use.