

**DATASHEET**

**CLIC5 Rabbit Polyclonal Antibody**

CAT. NO. APA18959

**KEY FEATURES**

Target	CLIC5	Source / Host	Rabbit
Reactivity	Human	Clonality	Polyclonal
Applications	WB, IHC	Conjugation	Unconjugated
Form / Buffer	Liquid in 0.42% Potassium phosphate, 0.87% Sodium chloride, pH 7.3, 30% glycerol, and 0.01% sodium azide.		Storage at -20°C

**BACKGROUND**

In the soluble state, catalyzes glutaredoxin-like thiol disulfide exchange reactions with reduced glutathione as electron donor . Can insert into membranes and form non-selective ion channels almost equally permeable to Na(+), K(+) and Cl(-) , K(+) and Cl(-) . Required for normal hearing . It is necessary for the formation of stereocilia in the inner ear and normal development of the organ of Corti . May play a role in the regulation of transepithelial ion absorption and secretion. Is required for the development and/or maintenance of the proper glomerular endothelial cell and podocyte architecture . Plays a role in formation of the lens suture in the eye, which is important for normal optical properties of the lens .

**APPLICATION**

To ensure optimal assay performance, AREX recommends conducting reagent titration tailored to each testing system for optimal detection results.

WB	1:500 - 1:1000
IHC	1:50 - 1:200

\*Results are sample-specific. Please refer to your local assay conditions and test parameters for reference.

**PRODUCT OVERVIEW**

Description	Rabbit polyclonal antibody to CLIC5
Specificity	Recognizes endogenous levels of CLIC5 protein.
Antibody Type	Primary antibody
Immunogen	Recombinant fusion protein of human CLIC5. The exact sequence is proprietary.
Purification	The antibody was purified by immunogen affinity chromatography.
Molecular Weight	Predicted: 46 kD; Observed: 55 kD
Form/Buffer	Liquid in 0.42% Potassium phosphate, 0.87% Sodium chloride, pH 7.3, 30% glycerol, and 0.01% sodium azide.
Alternative Names	Chloride intracellular channel protein 5
Gene Symbol	CLIC5
Entrez Gene	53405(Human)
SwissProt	Q9NZA1(Human)

\*AREX continuously optimizes our products. Webpage content may not reflect the latest updates. For inquiries, please contact [info@arexbio.com](mailto:info@arexbio.com) or your local distributor.

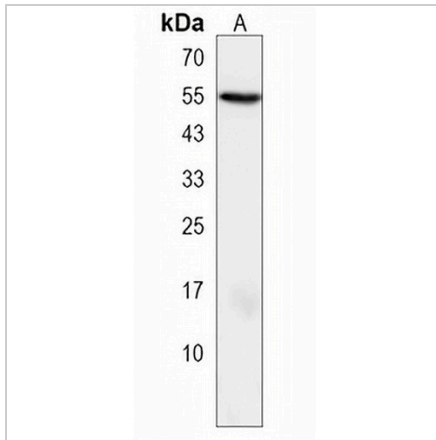
\*Clone Number, Reactivity, Source/Host and Clonality can be found in the product name and Key Features section above.

**DATASHEET**

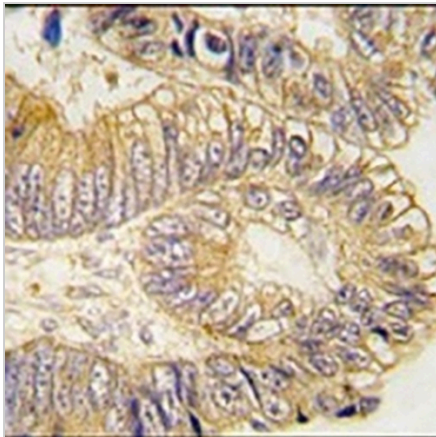
**CLIC5 Rabbit Polyclonal Antibody**

CAT. NO. APA18959

**DATA**



Western blot analysis of CLIC5 expression in K562 (A) whole cell lysates. (Predicted band size: 46 kD; Observed band size: 55 kD)



Immunohistochemical analysis of CLIC5 staining in human colon carcinoma formalin fixed paraffin embedded tissue section. The section was pre-treated using heat mediated antigen retrieval with sodium citrate buffer (pH 6.0). The section was then incubated with the antibody at room temperature and detected using an HRP conjugated compact polymer system. DAB was used as the chromogen. The section was then counterstained with haematoxylin and mounted with DPX.

**STORAGE**

Store at 4°C short term. For long term storage, store at -20°C, avoiding freeze/thaw cycles.

**NOTE**

For Research Use Only. Not for diagnostic, therapeutics, prophylactic or in vivo use.