

## DATASHEET

# CABP1 Rabbit Polyclonal Antibody

CAT. NO. APA18961

### KEY FEATURES

Target	CABP1	Source / Host	Rabbit
Reactivity	Human, Mouse, Rat	Clonality	Polyclonal
Applications	WB	Conjugation	Unconjugated
Form / Buffer	Liquid in 0.42% Potassium phosphate, 0.87% Sodium chloride, pH 7.3, 30% glycerol, and 0.01% sodium azide.		Storage at -20°C

### BACKGROUND

Modulates calcium-dependent activity of inositol 1,4,5-triphosphate receptors (ITPRs) . Inhibits agonist-induced intracellular calcium signaling . Enhances inactivation and does not support calcium-dependent facilitation of voltage-dependent P/Q-type calcium channels . Causes calcium-dependent facilitation and inhibits inactivation of L-type calcium channels by binding to the same sites as calmodulin in the C-terminal domain of CACNA1C, but has an opposite effect on channel function . Suppresses the calcium-dependent inactivation of CACNA1D . Inhibits TRPC5 channels . Prevents NMDA receptor-induced cellular degeneration. Required for the normal transfer of light signals through the retina .

### APPLICATION

To ensure optimal assay performance, AREX recommends conducting reagent titration tailored to each testing system for optimal detection results.

WB	1:500 - 1:1000
----	----------------

\*Results are sample-specific. Please refer to your local assay conditions and test parameters for reference.

### PRODUCT OVERVIEW

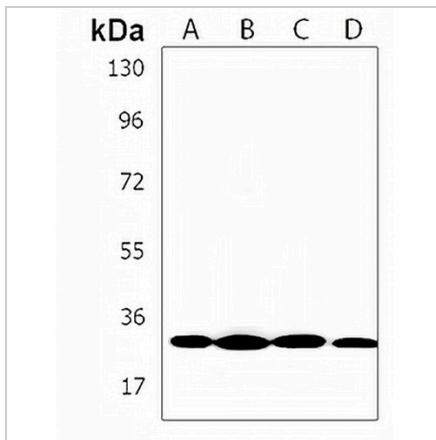
Description	Rabbit polyclonal antibody to CABP1
Specificity	Recognizes endogenous levels of CABP1 protein.
Antibody Type	Primary antibody
Immunogen	KLH-conjugated synthetic peptide encompassing a sequence within the C-terminal region of human CABP1. The exact sequence is proprietary.
Purification	The antibody was purified by immunogen affinity chromatography.
Molecular Weight	Predicted: 39 kD; Observed: 28 kD
Form/Buffer	Liquid in 0.42% Potassium phosphate, 0.87% Sodium chloride, pH 7.3, 30% glycerol, and 0.01% sodium azide.
Alternative Names	Calcium-binding protein 1; CaBP1; Calbrain; Caldendrin
Gene Symbol	CABP1
Entrez Gene	9478(Human); 29867(Mouse); 171051(Rat)
SwissProt	Q9NZU7(Human); Q9JLK7(Mouse); O88751(Rat)

\*AREX continuously optimizes our products. Webpage content may not reflect the latest updates. For inquiries, please contact [info@arexbio.com](mailto:info@arexbio.com) or your local distributor.

\*Clone Number, Reactivity, Source/Host and Clonality can be found in the product name and Key Features section above.

**DATASHEET****CABP1 Rabbit Polyclonal Antibody**

CAT. NO. APA18961

**DATA**

Western blot analysis of CABP1 expression in human brain (A), mouse brain (B), mouse cerebellum (C), rat brain (D) whole cell lysates. (Predicted band size: 39 kD; Observed band size: 28 kD)

**STORAGE**

Store at 4°C short term. For long term storage, store at -20°C, avoiding freeze/thaw cycles.

**NOTE**

For Research Use Only. Not for diagnostic, therapeutics, prophylactic or in vivo use.