

DATASHEET

PRKCDBP Rabbit Polyclonal Antibody

CAT. NO. APA18971

KEY FEATURES

Target	PRKCDBP	Source / Host	Rabbit
Reactivity	Human	Clonality	Polyclonal
Applications	WB	Conjugation	Unconjugated
Form / Buffer	Liquid in 0.42% Potassium phosphate, 0.87% Sodium chloride, pH 7.3, 30% glycerol, and 0.01% sodium azide.		Storage at-20°C

BACKGROUND

Regulates the traffic and/or budding of caveolae . Plays a role in caveola formation in a tissue-specific manner. Required for the formation of caveolae in smooth muscle but not in the lung and heart endothelial cells. Regulates the equilibrium between cell surface-associated and cell surface-dissociated caveolae by promoting the rapid release of caveolae from the cell surface. Plays a role in the regulation of the circadian clock. Modulates the period length and phase of circadian gene expression and also regulates expression and interaction of the core clock components PER1/2 and CRY1/2 .

APPLICATION

To ensure optimal assay performance, AREX recommends conducting reagent titration tailored to each testing system for optimal detection results.

WB	1:500 - 1:1000
----	----------------

*Results are sample-specific. Please refer to your local assay conditions and test parameters for reference.

PRODUCT OVERVIEW

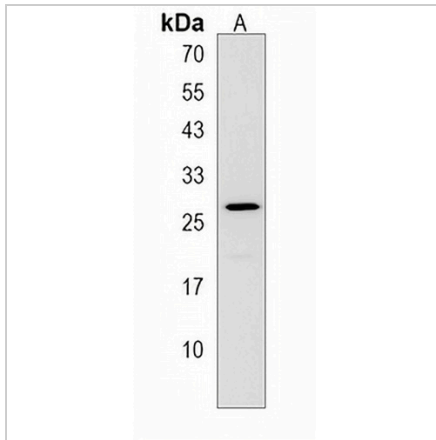
Description	Rabbit polyclonal antibody to PRKCDBP
Specificity	Recognizes endogenous levels of PRKCDBP protein.
Antibody Type	Primary antibody
Immunogen	KLH-conjugated synthetic peptide encompassing a sequence within the Central region of human PRKCDBP. The exact sequence is proprietary.
Purification	The antibody was purified by immunogen affinity chromatography.
Molecular Weight	Predicted: 27 kD; Observed: 28 kD
Form/Buffer	Liquid in 0.42% Potassium phosphate, 0.87% Sodium chloride, pH 7.3, 30% glycerol, and 0.01% sodium azide.
Alternative Names	SRBC; Protein kinase C delta-binding protein; Cavin-3; Serum deprivation response factor-related gene product that binds to C-kinase; hSRBC
Gene Symbol	PRKCDBP
Entrez Gene	112464(Human)
SwissProt	Q969G5(Human)

*AREX continuously optimizes our products. Webpage content may not reflect the latest updates. For inquiries, please contact info@arexbio.com or your local distributor.

*Clone Number, Reactivity, Source/Host and Clonality can be found in the product name and Key Features section above.

DATASHEET**PRKCDBP Rabbit Polyclonal Antibody**

CAT. NO. APA18971

DATA

Western blot analysis of PRKCDBP expression in A2058 (A) whole cell lysates. (Predicted band size: 27 kD; Observed band size: 28 kD)

STORAGE

Store at 4°C short term. For long term storage, store at -20°C, avoiding freeze/thaw cycles.

NOTE

For Research Use Only. Not for diagnostic, therapeutics, prophylactic or in vivo use.