

**DATASHEET**

**GNA12 Rabbit Polyclonal Antibody**

CAT. NO. APA18980

**KEY FEATURES**

Target	GNA12	Source / Host	Rabbit
Reactivity	Human	Clonality	Polyclonal
Applications	WB	Conjugation	Unconjugated
Form / Buffer	Liquid in 0.42% Potassium phosphate, 0.87% Sodium chloride, pH 7.3, 30% glycerol, and 0.01% sodium azide.		Storage at -20°C

**BACKGROUND**

Guanine nucleotide-binding proteins (G proteins) are involved as modulators or transducers in various transmembrane signaling systems. Activates effector molecule RhoA by binding and activating RhoGEFs (ARHGEF12/LARG). GNA12-dependent Rho signaling subsequently regulates transcription factor AP-1 (activating protein-1). GNA12-dependent Rho signaling also regulates protein phosphatase 2A activation causing dephosphorylation of its target proteins. Promotes tumor cell invasion and metastasis by activating RhoA/ROCK signaling pathway and up-regulating pro-inflammatory cytokine production. Inhibits CDH1-mediated cell adhesion in process independent from Rho activation.

**APPLICATION**

To ensure optimal assay performance, AREX recommends conducting reagent titration tailored to each testing system for optimal detection results.

WB	1:500 - 1:1000
----	----------------

\*Results are sample-specific. Please refer to your local assay conditions and test parameters for reference.

**PRODUCT OVERVIEW**

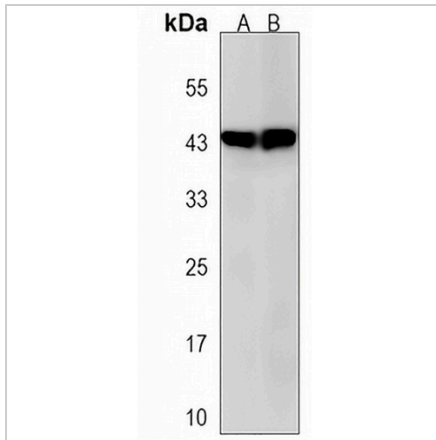
Description	Rabbit polyclonal antibody to GNA12
Specificity	Recognizes endogenous levels of GNA12 protein.
Antibody Type	Primary antibody
Immunogen	KLH-conjugated synthetic peptide encompassing a sequence within the N-terminal region of human GNA12. The exact sequence is proprietary.
Purification	The antibody was purified by immunogen affinity chromatography.
Molecular Weight	Predicted: 44 kD; Observed: 44 kD
Form/Buffer	Liquid in 0.42% Potassium phosphate, 0.87% Sodium chloride, pH 7.3, 30% glycerol, and 0.01% sodium azide.
Alternative Names	Guanine nucleotide-binding protein subunit alpha-12; G alpha-12; G-protein subunit alpha-12
Gene Symbol	GNA12
Entrez Gene	2768(Human)
SwissProt	Q03113(Human)

\*AREX continuously optimizes our products. Webpage content may not reflect the latest updates. For inquiries, please contact [info@arexbio.com](mailto:info@arexbio.com) or your local distributor.

\*Clone Number, Reactivity, Source/Host and Clonality can be found in the product name and Key Features section above.

**DATASHEET****GNA12 Rabbit Polyclonal Antibody**

CAT. NO. APA18980

**DATA**

Western blot analysis of GNA12 expression in A2058 (A), MCF7 (B) whole cell lysates.  
(Predicted band size: 44 kD; Observed band size: 44 kD)

**STORAGE**

Store at 4°C short term. For long term storage, store at -20°C, avoiding freeze/thaw cycles.

**NOTE**

For Research Use Only. Not for diagnostic, therapeutics, prophylactic or in vivo use.