

## DATASHEET

# PIP4K2C Rabbit Polyclonal Antibody

CAT. NO. APA18981

### KEY FEATURES

Target	PIP4K2C	Source / Host	Rabbit
Reactivity	Human	Clonality	Polyclonal
Applications	WB, IHC	Conjugation	Unconjugated
Form / Buffer	Liquid in 0.42% Potassium phosphate, 0.87% Sodium chloride, pH 7.3, 30% glycerol, and 0.01% sodium azide.		Storage at-20°C

### BACKGROUND

Phosphatidylinositol 5-phosphate 4-kinase with low enzymatic activity. May be a GTP sensor, has higher GTP-dependent kinase activity than ATP-dependent kinase activity. PIP4Ks negatively regulate insulin signaling through a catalytic-independent mechanism. They interact with PIP5Ks and suppress PIP5K-mediated PtdIns(4,5)P<sub>2</sub> synthesis and insulin-dependent conversion to PtdIns(3,4,5)P<sub>3</sub> P<sub>2</sub> synthesis and insulin-dependent conversion to PtdIns(3,4,5)P<sub>3</sub>.

### APPLICATION

To ensure optimal assay performance, AREX recommends conducting reagent titration tailored to each testing system for optimal detection results.

WB	1:500 - 1:1000
IHC	1:50 - 1:200

\*Results are sample-specific. Please refer to your local assay conditions and test parameters for reference.

### PRODUCT OVERVIEW

Description	Rabbit polyclonal antibody to PIP4K2C
Specificity	Recognizes endogenous levels of PIP4K2C protein.
Antibody Type	Primary antibody
Immunogen	KLH-conjugated synthetic peptide encompassing a sequence within the C-terminal region of human PIP4K2C. The exact sequence is proprietary.
Purification	The antibody was purified by immunogen affinity chromatography.
Molecular Weight	Predicted: 47 kD; Observed: 38 kD
Form/Buffer	Liquid in 0.42% Potassium phosphate, 0.87% Sodium chloride, pH 7.3, 30% glycerol, and 0.01% sodium azide.
Alternative Names	PIP5K2C; Phosphatidylinositol 5-phosphate 4-kinase type-2 gamma; Phosphatidylinositol 5-phosphate 4-kinase type II gamma; PI(5)P 4-kinase type II gamma; PIP4KII-gamma
Gene Symbol	PIP4K2C
Entrez Gene	79837(Human)
SwissProt	Q8TBX8(Human)

\*AREX continuously optimizes our products. Webpage content may not reflect the latest updates. For inquiries, please contact [info@arexbio.com](mailto:info@arexbio.com) or your local distributor.

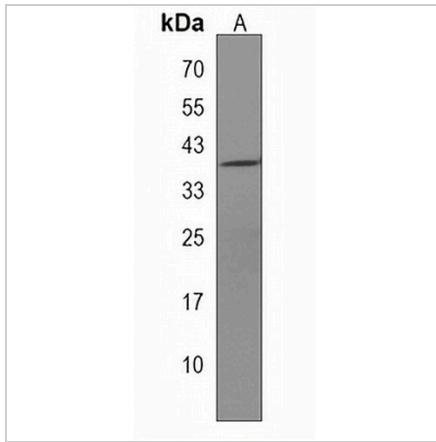
\*Clone Number, Reactivity, Source/Host and Clonality can be found in the product name and Key Features section above.

**DATASHEET**

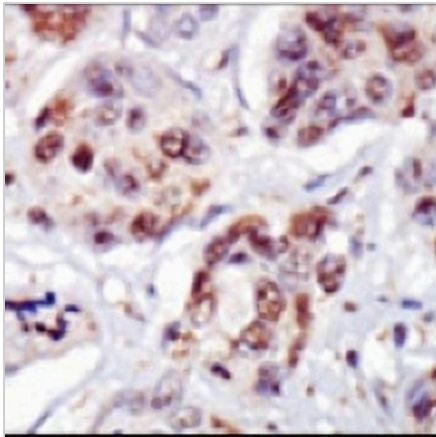
**PIP4K2C Rabbit Polyclonal Antibody**

CAT. NO. APA18981

**DATA**



Western blot analysis of PIP4K2C expression in human brain (A) whole cell lysates. (Predicted band size: 47 kD; Observed band size: 38 kD)



Immunohistochemical analysis of PIP4K2C staining in human breast carcinoma formalin fixed paraffin embedded tissue section. The section was pre-treated using heat mediated antigen retrieval with sodium citrate buffer (pH 6.0). The section was then incubated with the antibody at room temperature and detected using an HRP conjugated compact polymer system. DAB was used as the chromogen. The section was then counterstained with haematoxylin and mounted with DPX.

**STORAGE**

Store at 4°C short term. For long term storage, store at -20°C, avoiding freeze/thaw cycles.

**NOTE**

For Research Use Only. Not for diagnostic, therapeutics, prophylactic or in vivo use.