

DATASHEET

TRPM7 Rabbit Polyclonal Antibody

CAT. NO. APA18982

KEY FEATURES

Target	TRPM7	Source / Host	Rabbit
Reactivity	Human, Mouse	Clonality	Polyclonal
Applications	WB, IHC	Conjugation	Unconjugated
Form / Buffer	Liquid in 0.42% Potassium phosphate, 0.87% Sodium chloride, pH 7.3, 30% glycerol, and 0.01% sodium azide.		Storage at -20°C

BACKGROUND

Bifunctional protein that combines an ion channel with an intrinsic kinase domain, enabling it to modulate cellular functions either by conducting ions through the pore or by phosphorylating downstream proteins via its kinase domain. The channel is highly permeable to divalent cations, specifically calcium (Ca²⁺), magnesium (Mg²⁺) and zinc (Zn²⁺) and mediates their influx, magnesium (Mg²⁺) and zinc (Zn²⁺) and mediates their influx. Controls a wide range of biological processes such as Ca²⁺ (+), Mg²⁺ (+) and Zn²⁺ (+) homeostasis, vesicular Zn²⁺ release channel and intracellular Ca²⁺ (+) signaling, embryonic development, immune responses, cell motility, proliferation and differentiation. The C-terminal alpha-kinase domain autophosphorylates cytoplasmic residues of TRPM7.

APPLICATION

To ensure optimal assay performance, AREX recommends conducting reagent titration tailored to each testing system for optimal detection results.

WB	1:500 - 1:1000
IHC	1:50 - 1:200

*Results are sample-specific. Please refer to your local assay conditions and test parameters for reference.

PRODUCT OVERVIEW

Description	Rabbit polyclonal antibody to TRPM7
Specificity	Recognizes endogenous levels of TRPM7 protein.
Antibody Type	Primary antibody
Immunogen	KLH-conjugated synthetic peptide encompassing a sequence within the C-terminal region of human TRPM7. The exact sequence is proprietary.
Purification	The antibody was purified by immunogen affinity chromatography.
Molecular Weight	Predicted: 212 kD; Observed: 200 kD
Form/Buffer	Liquid in 0.42% Potassium phosphate, 0.87% Sodium chloride, pH 7.3, 30% glycerol, and 0.01% sodium azide.
Alternative Names	CHAK1; LTRPC7; Transient receptor potential cation channel subfamily M member 7; Channel-kinase 1; Long transient receptor potential channel 7; LTrpC-7; LTrpC7
Gene Symbol	TRPM7
Entrez Gene	54822(Human); 58800(Mouse)
SwissProt	Q96QT4(Human); Q923J1(Mouse)

*AREX continuously optimizes our products. Webpage content may not reflect the latest updates. For inquiries, please contact info@arexbio.com or your local distributor.

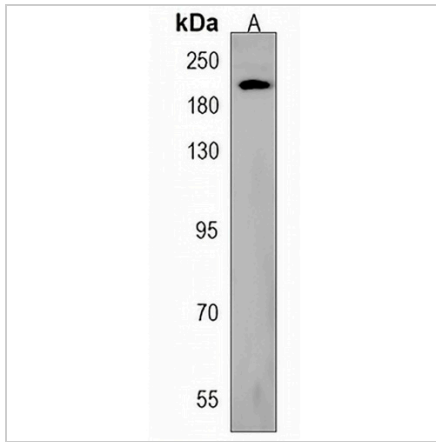
*Clone Number, Reactivity, Source/Host and Clonality can be found in the product name and Key Features section above.

DATASHEET

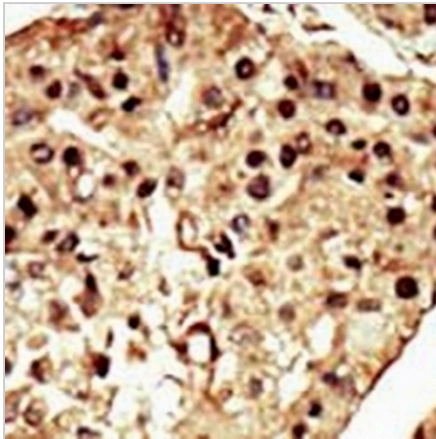
TRPM7 Rabbit Polyclonal Antibody

CAT. NO. APA18982

DATA



Western blot analysis of TRPM7 expression in mouse kidney (A) whole cell lysates. (Predicted band size: 212 kD; Observed band size: 200 kD)



Immunohistochemical analysis of TRPM7 staining in human hepatocarcinoma formalin fixed paraffin embedded tissue section. The section was pre-treated using heat mediated antigen retrieval with sodium citrate buffer (pH 6.0). The section was then incubated with the antibody at room temperature and detected using an HRP conjugated compact polymer system. DAB was used as the chromogen. The section was then counterstained with haematoxylin and mounted with DPX.

STORAGE

Store at 4°C short term. For long term storage, store at -20°C, avoiding freeze/thaw cycles.

NOTE

For Research Use Only. Not for diagnostic, therapeutics, prophylactic or in vivo use.