

DATASHEET

NEK1 Rabbit Polyclonal Antibody

CAT. NO. APA18984

KEY FEATURES

Target	NEK1	Source / Host	Rabbit
Reactivity	Human	Clonality	Polyclonal
Applications	WB, IHC	Conjugation	Unconjugated
Form / Buffer	Liquid in 0.42% Potassium phosphate, 0.87% Sodium chloride, pH 7.3, 30% glycerol, and 0.01% sodium azide.		Storage at -20°C

BACKGROUND

Phosphorylates serines and threonines, but also appears to possess tyrosine kinase activity . Involved in DNA damage checkpoint control and for proper DNA damage repair . In response to injury that includes DNA damage, NEK1 phosphorylates VDAC1 to limit mitochondrial cell death . May be implicated in the control of meiosis . Involved in cilium assembly .

APPLICATION

To ensure optimal assay performance, AREX recommends conducting reagent titration tailored to each testing system for optimal detection results.

WB	1:500 - 1:1000
IHC	1:50 - 1:200

*Results are sample-specific. Please refer to your local assay conditions and test parameters for reference.

PRODUCT OVERVIEW

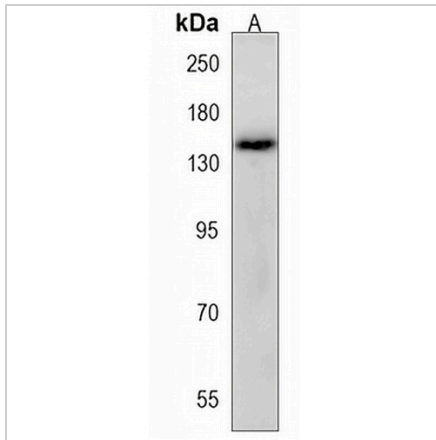
Description	Rabbit polyclonal antibody to NEK1
Specificity	Recognizes endogenous levels of NEK1 protein.
Antibody Type	Primary antibody
Immunogen	KLH-conjugated synthetic peptide encompassing a sequence within the C-terminal region of human NEK1. The exact sequence is proprietary.
Purification	The antibody was purified by immunogen affinity chromatography.
Molecular Weight	Predicted: 142 kD; Observed: 143 kD
Form/Buffer	Liquid in 0.42% Potassium phosphate, 0.87% Sodium chloride, pH 7.3, 30% glycerol, and 0.01% sodium azide.
Alternative Names	KIAA1901; Serine/threonine-protein kinase Nek1; Never in mitosis A-related kinase 1; NimA-related protein kinase 1; Renal carcinoma antigen NY-REN-55
Gene Symbol	NEK1
Entrez Gene	4750(Human)
SwissProt	Q96PY6(Human)

*AREX continuously optimizes our products. Webpage content may not reflect the latest updates. For inquiries, please contact info@arex.bio or your local distributor.

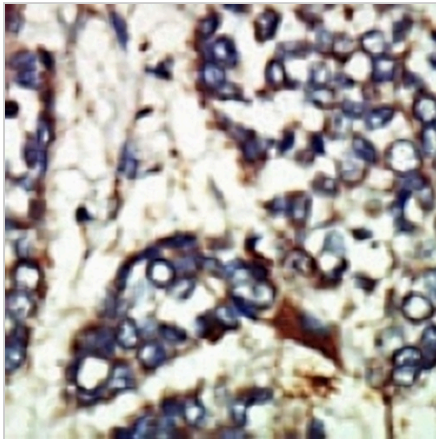
*Clone Number, Reactivity, Source/Host and Clonality can be found in the product name and Key Features section above.

DATASHEET**NEK1 Rabbit Polyclonal Antibody**

CAT. NO. APA18984

DATA

Western blot analysis of NEK1 expression in human fetal kidney (A) whole cell lysates. (Predicted band size: 142 kD; Observed band size: 143 kD)



Immunohistochemical analysis of NEK1 staining in human hepatocarcinoma formalin fixed paraffin embedded tissue section. The section was pre-treated using heat mediated antigen retrieval with sodium citrate buffer (pH 6.0). The section was then incubated with the antibody at room temperature and detected using an HRP conjugated compact polymer system. DAB was used as the chromogen. The section was then counterstained with haematoxylin and mounted with DPX.

STORAGE

Store at 4°C short term. For long term storage, store at -20°C, avoiding freeze/thaw cycles.

NOTE

For Research Use Only. Not for diagnostic, therapeutics, prophylactic or in vivo use.