

DATASHEET

NME5 Rabbit Polyclonal Antibody

CAT. NO. APA18985

KEY FEATURES

Target	NME5	Source / Host	Rabbit
Reactivity	Human	Clonality	Polyclonal
Applications	WB, IHC	Conjugation	Unconjugated
Form / Buffer	Liquid in 0.42% Potassium phosphate, 0.87% Sodium chloride, pH 7.3, 30% glycerol, and 0.01% sodium azide.		Storage at-20°C

BACKGROUND

Functions as part of axonemal radial spoke complexes, which play an important part in the motility of sperm and cilia . In vitro, does not display nucleoside diphosphate kinase (NDPK) activity (Probable) activity (Probable) . Exhibits a 3'-5'-DNA exonuclease activity that removes single nucleotides from the 3' terminus of single-stranded DNA substrates and digests overhanging mismatched 3' termini from double-stranded DNA substrates, possibly participating in DNA nucleolytic processing . Confers protection from cell death mediated by BAX and alters the cellular levels of several antioxidant enzymes, including GPX5 . Might be involved in spermiogenesis by enhancing the ability of late-stage spermatids to eliminate reactive oxygen species .

APPLICATION

To ensure optimal assay performance, AREX recommends conducting reagent titration tailored to each testing system for optimal detection results.

WB	1:500 - 1:1000
IHC	1:50 - 1:200

*Results are sample-specific. Please refer to your local assay conditions and test parameters for reference.

PRODUCT OVERVIEW

Description	Rabbit polyclonal antibody to NME5
Specificity	Recognizes endogenous levels of NME5 protein.
Antibody Type	Primary antibody
Immunogen	KLH-conjugated synthetic peptide encompassing a sequence within the Central region of human NME5. The exact sequence is proprietary.
Purification	The antibody was purified by immunogen affinity chromatography.
Molecular Weight	Predicted: 24 kD; Observed: 32 kD
Form/Buffer	Liquid in 0.42% Potassium phosphate, 0.87% Sodium chloride, pH 7.3, 30% glycerol, and 0.01% sodium azide.
Alternative Names	Nucleoside diphosphate kinase homolog 5; NDK-H 5; NDP kinase homolog 5; Inhibitor of p53-induced apoptosis-beta; IPIA-beta; Testis-specific nm23 homolog; nm23-H5
Gene Symbol	NME5
Entrez Gene	8382(Human)
SwissProt	P56597(Human)

*AREX continuously optimizes our products. Webpage content may not reflect the latest updates. For inquiries, please contact info@arexbio.com or your local distributor.

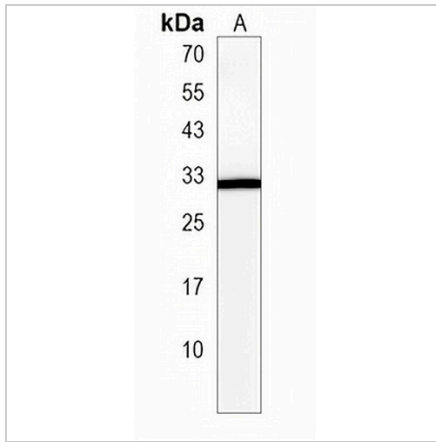
*Clone Number, Reactivity, Source/Host and Clonality can be found in the product name and Key Features section above.

DATASHEET

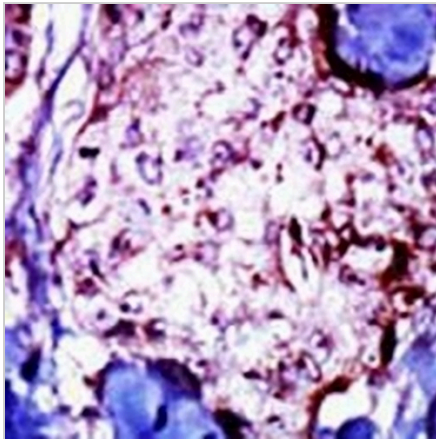
NME5 Rabbit Polyclonal Antibody

CAT. NO. APA18985

DATA



Western blot analysis of NME5 expression in HeLa (A) whole cell lysates. (Predicted band size: 24 kD; Observed band size: 32 kD)



Immunohistochemical analysis of NME5 staining in human breast carcinoma formalin fixed paraffin embedded tissue section. The section was pre-treated using heat mediated antigen retrieval with sodium citrate buffer (pH 6.0). The section was then incubated with the antibody at room temperature and detected using an HRP conjugated compact polymer system. DAB was used as the chromogen. The section was then counterstained with haematoxylin and mounted with DPX.

STORAGE

Store at 4°C short term. For long term storage, store at -20°C, avoiding freeze/thaw cycles.

NOTE

For Research Use Only. Not for diagnostic, therapeutics, prophylactic or in vivo use.