

DATASHEET

NME7 Rabbit Polyclonal Antibody

CAT. NO. APA18986

KEY FEATURES

Target	NME7	Source / Host	Rabbit
Reactivity	Human	Clonality	Polyclonal
Applications	WB, IHC	Conjugation	Unconjugated
Form / Buffer	Liquid in 0.42% Potassium phosphate, 0.87% Sodium chloride, pH 7.3, 30% glycerol, and 0.01% sodium azide.		Storage at -20°C

BACKGROUND

Possesses an intrinsic kinase activity . Phosphorylates GSK3B at 'Ser-9', leading to the activation of Wnt/beta-catenin signaling . Additionally, exhibits a 3'-5'-DNA exonuclease activity that removes single nucleotides from the 3' terminus of single-stranded DNA substrates and digests overhanging mismatched 3' termini from double-stranded DNA substrates, possibly participating in DNA nucleolytic processing . In vitro, does not seem to have nucleoside diphosphate kinase activity . Functional component of the gamma-tubulin ring complex, implicated in the regulation of its microtubule-nucleating activity in centrosomes, in a kinase activity-dependent manner . May maintain primary cilium assembly and ciliary microtubule stability .

APPLICATION

To ensure optimal assay performance, AREX recommends conducting reagent titration tailored to each testing system for optimal detection results.

WB	1:500 - 1:1000
IHC	1:50 - 1:200

*Results are sample-specific. Please refer to your local assay conditions and test parameters for reference.

PRODUCT OVERVIEW

Description	Rabbit polyclonal antibody to NME7
Specificity	Recognizes endogenous levels of NME7 protein.
Antibody Type	Primary antibody
Immunogen	KLH-conjugated synthetic peptide encompassing a sequence within the N-terminal region of human NME7. The exact sequence is proprietary.
Purification	The antibody was purified by immunogen affinity chromatography.
Molecular Weight	Predicted: 42 kD; Observed: 48 kD
Form/Buffer	Liquid in 0.42% Potassium phosphate, 0.87% Sodium chloride, pH 7.3, 30% glycerol, and 0.01% sodium azide.
Alternative Names	Nucleoside diphosphate kinase 7; NDK 7; NDP kinase 7; nm23-H7
Gene Symbol	NME7
Entrez Gene	29922(Human)
SwissProt	Q9Y5B8(Human)

*AREX continuously optimizes our products. Webpage content may not reflect the latest updates. For inquiries, please contact info@arexbio.com or your local distributor.

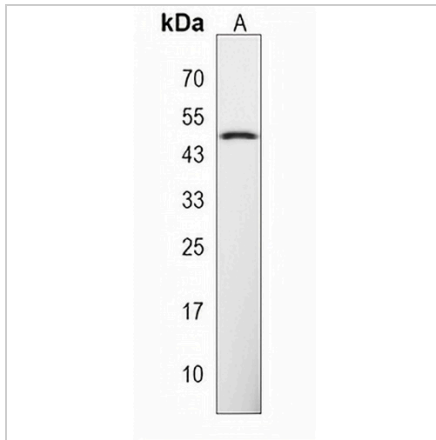
*Clone Number, Reactivity, Source/Host and Clonality can be found in the product name and Key Features section above.

DATASHEET

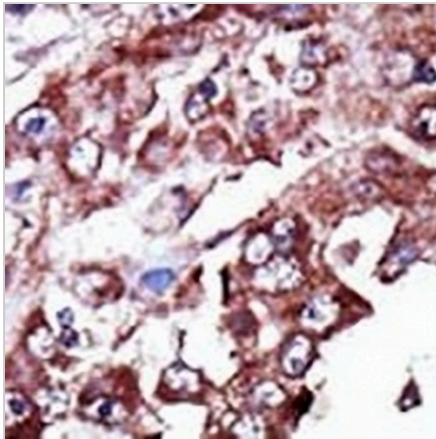
NME7 Rabbit Polyclonal Antibody

CAT. NO. APA18986

DATA



Western blot analysis of NME7 expression in A549 (A) whole cell lysates. (Predicted band size: 42 kD; Observed band size: 48 kD)



Immunohistochemical analysis of NME7 staining in human breast carcinoma formalin fixed paraffin embedded tissue section. The section was pre-treated using heat mediated antigen retrieval with sodium citrate buffer (pH 6.0). The section was then incubated with the antibody at room temperature and detected using an HRP conjugated compact polymer system. DAB was used as the chromogen. The section was then counterstained with haematoxylin and mounted with DPX.

STORAGE

Store at 4°C short term. For long term storage, store at -20°C, avoiding freeze/thaw cycles.

NOTE

For Research Use Only. Not for diagnostic, therapeutics, prophylactic or in vivo use.