

DATASHEET

ARHGAP26 Rabbit Polyclonal Antibody

CAT. NO. APA18987

KEY FEATURES

Target	ARHGAP26	Source / Host	Rabbit
Reactivity	Human	Clonality	Polyclonal
Applications	WB	Conjugation	Unconjugated
Form / Buffer	Liquid in 0.42% Potassium phosphate, 0.87% Sodium chloride, pH 7.3, 30% glycerol, and 0.01% sodium azide.		Storage at -20°C

BACKGROUND

GTPase-activating protein for RHOA and CDC42. Facilitates mitochondrial quality control by promoting Parkin-mediated recruitment of autophagosomes to damaged mitochondria . Negatively regulates the growth of human parainfluenza virus type 2 by inhibiting hPIV-2-mediated RHOA activation via interaction with two of its viral proteins P and V .

APPLICATION

To ensure optimal assay performance, AREX recommends conducting reagent titration tailored to each testing system for optimal detection results.

WB	1:500 - 1:1000
----	----------------

*Results are sample-specific. Please refer to your local assay conditions and test parameters for reference.

PRODUCT OVERVIEW

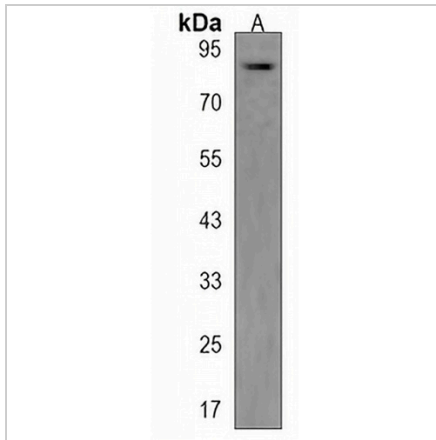
Description	Rabbit polyclonal antibody to ARHGAP26
Specificity	Recognizes endogenous levels of ARHGAP26 protein.
Antibody Type	Primary antibody
Immunogen	KLH-conjugated synthetic peptide encompassing a sequence within the Central region of human ARHGAP26. The exact sequence is proprietary.
Purification	The antibody was purified by immunogen affinity chromatography.
Molecular Weight	Predicted: 92 kD; Observed: 93 kD
Form/Buffer	Liquid in 0.42% Potassium phosphate, 0.87% Sodium chloride, pH 7.3, 30% glycerol, and 0.01% sodium azide.
Alternative Names	GRAF; KIAA0621; OPHN1L; Rho GTPase-activating protein 26; GTPase regulator associated with focal adhesion kinase; Oligophrenin-1-like protein; Rho-type GTPase-activating protein 26
Gene Symbol	ARHGAP26
Entrez Gene	23092(Human)
SwissProt	Q9UNA1(Human)

*AREX continuously optimizes our products. Webpage content may not reflect the latest updates. For inquiries, please contact info@arexbio.com or your local distributor.

*Clone Number, Reactivity, Source/Host and Clonality can be found in the product name and Key Features section above.

DATASHEET**ARHGAP26 Rabbit Polyclonal Antibody**

CAT. NO. APA18987

DATA

Western blot analysis of ARHGAP26 expression in Ramos (A) whole cell lysates. (Predicted band size: 92 kD; Observed band size: 93 kD)

STORAGE

Store at 4°C short term. For long term storage, store at -20°C, avoiding freeze/thaw cycles.

NOTE

For Research Use Only. Not for diagnostic, therapeutics, prophylactic or in vivo use.