

DATASHEET

PFKFB4 Rabbit Polyclonal Antibody

CAT. NO. APA18990

KEY FEATURES

Target	PFKFB4	Source / Host	Rabbit
Reactivity	Human, Mouse	Clonality	Polyclonal
Applications	WB	Conjugation	Unconjugated
Form / Buffer	Liquid in 0.42% Potassium phosphate, 0.87% Sodium chloride, pH 7.3, 30% glycerol, and 0.01% sodium azide.	Storage	at-20°C

BACKGROUND

Synthesis and degradation of fructose 2,6-bisphosphate.

APPLICATION

To ensure optimal assay performance, AREX recommends conducting reagent titration tailored to each testing system for optimal detection results.

WB	1:500 - 1:1000
----	----------------

*Results are sample-specific. Please refer to your local assay conditions and test parameters for reference.

PRODUCT OVERVIEW

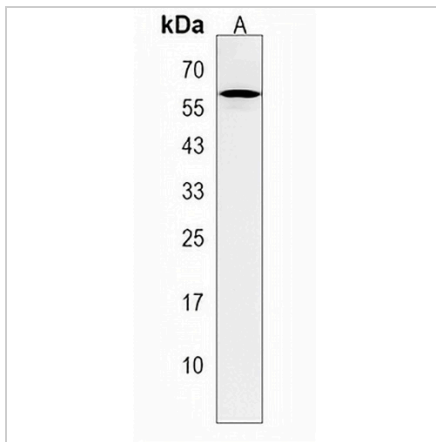
Description	Rabbit polyclonal antibody to PFKFB4
Specificity	Recognizes endogenous levels of PFKFB4 protein.
Antibody Type	Primary antibody
Immunogen	KLH-conjugated synthetic peptide encompassing a sequence within the Central region of human PFKFB4. The exact sequence is proprietary.
Purification	The antibody was purified by immunogen affinity chromatography.
Molecular Weight	Predicted: 54 kD; Observed: 54 kD
Form/Buffer	Liquid in 0.42% Potassium phosphate, 0.87% Sodium chloride, pH 7.3, 30% glycerol, and 0.01% sodium azide.
Alternative Names	6-phosphofructo-2-kinase/fructose-2,6-bisphosphatase 4; 6PF-2-K/Fru-2,6-P2ase 4; PFK/FBPase 4; 6PF-2-K/Fru-2,6-P2ase testis-type isozyme
Gene Symbol	PFKFB4
Entrez Gene	5210(Human); 270198(Mouse)
SwissProt	Q16877(Human); Q6DTY7(Mouse)

*AREX continuously optimizes our products. Webpage content may not reflect the latest updates. For inquiries, please contact info@arexbio.com or your local distributor.

*Clone Number, Reactivity, Source/Host and Clonality can be found in the product name and Key Features section above.

DATASHEET**PFKFB4 Rabbit Polyclonal Antibody**

CAT. NO. APA18990

DATA

Western blot analysis of PFKFB4 expression in mouse brain (A) whole cell lysates.
(Predicted band size: 54 kD; Observed band size: 54 kD)

STORAGE

Store at 4°C short term. For long term storage, store at -20°C, avoiding freeze/thaw cycles.

NOTE

For Research Use Only. Not for diagnostic, therapeutics, prophylactic or in vivo use.