

**DATASHEET**

**CIB2 Rabbit Polyclonal Antibody**

CAT. NO. APA18991

**KEY FEATURES**

Target	CIB2	Source / Host	Rabbit
Reactivity	Human	Clonality	Polyclonal
Applications	WB, IHC	Conjugation	Unconjugated
Form / Buffer	Liquid in 0.42% Potassium phosphate, 0.87% Sodium chloride, pH 7.3, 30% glycerol, and 0.01% sodium azide.		Storage at-20°C

**BACKGROUND**

Calcium- and integrin-binding protein that plays a role in intracellular calcium homeostasis . Acts as an auxiliary subunit of the sensory mechanoelectrical transduction (MET) channel in hair cells . Essential for mechanoelectrical transduction (MET) currents in auditory hair cells and thereby required for hearing . Regulates the function of hair cell mechanotransduction by controlling the distribution of transmembrane channel-like proteins TMC1 and TMC2, and by regulating the function of the MET channels in hair cells . Required for the maintenance of auditory hair cell stereocilia bundle morphology and function and for hair-cell survival in the cochlea . Critical for proper photoreceptor cell maintenance and function .

**APPLICATION**

To ensure optimal assay performance, AREX recommends conducting reagent titration tailored to each testing system for optimal detection results.

WB	1:500 - 1:1000
IHC	1:50 - 1:200

\*Results are sample-specific. Please refer to your local assay conditions and test parameters for reference.

**PRODUCT OVERVIEW**

Description	Rabbit polyclonal antibody to CIB2
Specificity	Recognizes endogenous levels of CIB2 protein.
Antibody Type	Primary antibody
Immunogen	KLH-conjugated synthetic peptide encompassing a sequence within the N-terminal region of human CIB2. The exact sequence is proprietary.
Purification	The antibody was purified by immunogen affinity chromatography.
Molecular Weight	Predicted: 21 kD; Observed: 24 kD
Form/Buffer	Liquid in 0.42% Potassium phosphate, 0.87% Sodium chloride, pH 7.3, 30% glycerol, and 0.01% sodium azide.
Alternative Names	KIP2; Calcium and integrin-binding family member 2; Kinase-interacting protein 2; KIP 2
Gene Symbol	CIB2
Entrez Gene	10518(Human)
SwissProt	O75838(Human)

\*AREX continuously optimizes our products. Webpage content may not reflect the latest updates. For inquiries, please contact [info@arexbio.com](mailto:info@arexbio.com) or your local distributor.

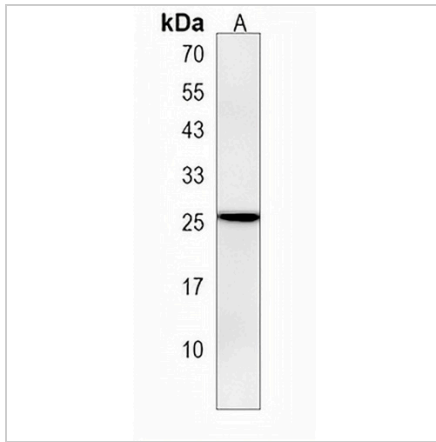
\*Clone Number, Reactivity, Source/Host and Clonality can be found in the product name and Key Features section above.

**DATASHEET**

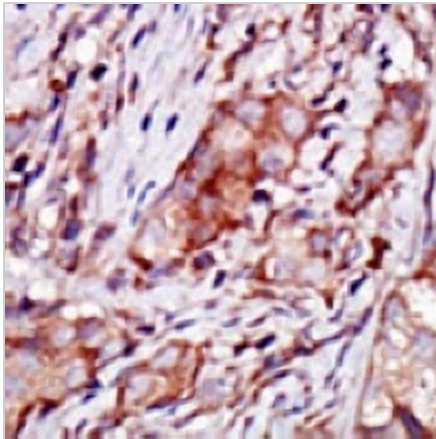
**CIB2 Rabbit Polyclonal Antibody**

CAT. NO. APA18991

**DATA**



Western blot analysis of CIB2 expression in SHSY5Y (A) whole cell lysates. (Predicted band size: 21 kD; Observed band size: 24 kD)



Immunohistochemical analysis of CIB2 staining in human breast carcinoma formalin fixed paraffin embedded tissue section. The section was pre-treated using heat mediated antigen retrieval with sodium citrate buffer (pH 6.0). The section was then incubated with the antibody at room temperature and detected using an HRP conjugated compact polymer system. DAB was used as the chromogen. The section was then counterstained with haematoxylin and mounted with DPX.

**STORAGE**

Store at 4°C short term. For long term storage, store at -20°C, avoiding freeze/thaw cycles.

**NOTE**

For Research Use Only. Not for diagnostic, therapeutics, prophylactic or in vivo use.