

DATASHEET

ATP12A Rabbit Polyclonal Antibody

CAT. NO. APA19005

KEY FEATURES

Target	ATP12A	Source / Host	Rabbit
Reactivity	Human	Clonality	Polyclonal
Applications	WB, IHC, FC	Conjugation	Unconjugated
Form / Buffer	Liquid in 0.42% Potassium phosphate, 0.87% Sodium chloride, pH 7.3, 30% glycerol, and 0.01% sodium azide.		Storage at -20°C

BACKGROUND

The catalytic subunit of a H(+)/K(+) ATPase and/or Na(+)/K(+) ATPase pump which transports K(+) ions in exchange for Na(+) and/or H(+) ions across the apical membrane of epithelial cells. Uses ATP as an energy source to pump K(+) ions into the cell while transporting Na(+) and/or H(+) ions to the extracellular compartment /K(+) ATPase and/or Na(+)/K(+) ATPase pump which transports K(+) ions in exchange for Na(+) and/or H(+) ions across the apical membrane of epithelial cells. Uses ATP as an energy source to pump K(+) ions into the cell while transporting Na(+) and/or H(+) ions to the extracellular compartment . Involved in the maintenance of electrolyte homeostasis through K(+) ion absorption in kidney and colon .

APPLICATION

To ensure optimal assay performance, AREX recommends conducting reagent titration tailored to each testing system for optimal detection results.

WB	1:500 - 1:1000
IHC	1:50 - 1:200
FC	1:10 - 1:50

*Results are sample-specific. Please refer to your local assay conditions and test parameters for reference.

PRODUCT OVERVIEW

Description	Rabbit polyclonal antibody to ATP12A
Specificity	Recognizes endogenous levels of ATP12A protein.
Antibody Type	Primary antibody
Immunogen	KLH-conjugated synthetic peptide encompassing a sequence within the Central region of human ATP12A. The exact sequence is proprietary.
Purification	The antibody was purified by immunogen affinity chromatography.
Molecular Weight	Predicted: 115 kD; Observed: 98 kD
Form/Buffer	Liquid in 0.42% Potassium phosphate, 0.87% Sodium chloride, pH 7.3, 30% glycerol, and 0.01% sodium azide.
Alternative Names	ATP1AL1; Potassium-transporting ATPase alpha chain 2; Non-gastric H(+)/K(+) ATPase subunit alpha; Proton pump
Gene Symbol	ATP12A
Entrez Gene	479(Human)
SwissProt	P54707(Human)

*AREX continuously optimizes our products. Webpage content may not reflect the latest updates. For inquiries, please contact info@arexbio.com or your local distributor.

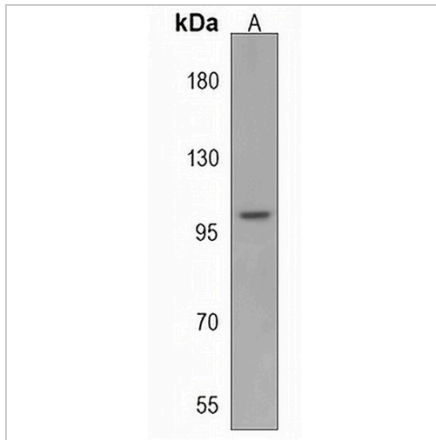
*Clone Number, Reactivity, Source/Host and Clonality can be found in the product name and Key Features section above.

DATASHEET

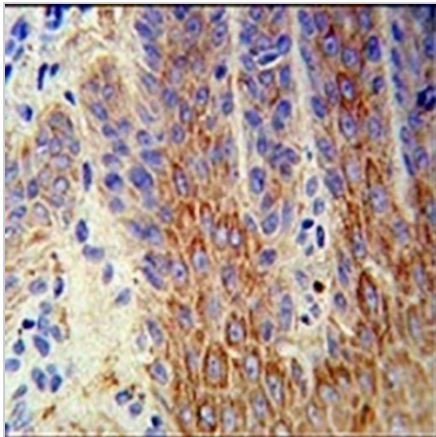
ATP12A Rabbit Polyclonal Antibody

CAT. NO. APA19005

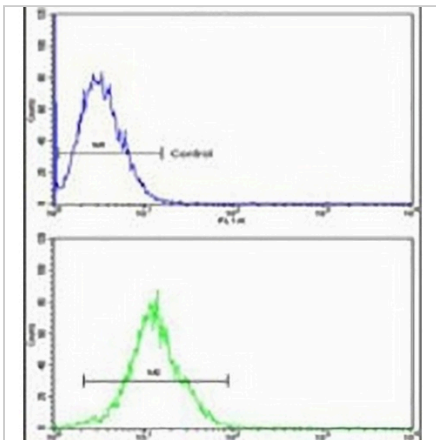
DATA



Western blot analysis of ATP12A expression in K562 (A) whole cell lysates. (Predicted band size: 115 kD; Observed band size: 98 kD)



Immunohistochemical analysis of ATP12A staining in human skin formalin fixed paraffin embedded tissue section. The section was pre-treated using heat mediated antigen retrieval with sodium citrate buffer (pH 6.0). The section was then incubated with the antibody at room temperature and detected using an HRP conjugated compact polymer system. DAB was used as the chromogen. The section was then counterstained with haematoxylin and mounted with DPX.



Flow cytometric analysis of k562 cells using Anti-ATP12A Antibody. The cells were fixed with 2% paraformaldehyde (10 min) and then permeabilized with 90% methanol for 10 min. The cells were incubated in 2% bovine serum albumin to block non-specific protein-protein interactions followed by the antibody at 37 °C for 60 min. The secondary antibody Goat Anti-Rabbit IgG (H&L) - AREX® Fluor 488 was incubated at 37 °C for 40 min. Isotype control antibody (blue line) was used under the same condition.

STORAGE

Store at 4°C short term. For long term storage, store at -20°C, avoiding freeze/thaw cycles.

NOTE

For Research Use Only. Not for diagnostic, therapeutics, prophylactic or in vivo use.