

DATASHEET

ALOX12 Rabbit Polyclonal Antibody

CAT. NO. APA19021

KEY FEATURES

Target	ALOX12	Source / Host	Rabbit
Reactivity	Human, Mouse, Rat	Clonality	Polyclonal
Applications	WB	Conjugation	Unconjugated
Form / Buffer	Liquid in 0.42% Potassium phosphate, 0.87% Sodium chloride, pH 7.3, 30% glycerol, and 0.01% sodium azide.		Storage at-20°C

BACKGROUND

Catalyzes the regio and stereo-specific incorporation of molecular oxygen into free and esterified polyunsaturated fatty acids generating lipid hydroperoxides that can be further reduced to the corresponding hydroxy species . Mainly converts arachidonate ((5Z,8Z,11Z,14Z)-eicosatetraenoate) to the specific bioactive lipid (12S)-hydroperoxyeicosatetraenoate/(12S)-HPETE . Through the production of bioactive lipids like (12S)-HPETE it regulates different biological processes including platelet activation . It can also catalyze the epoxidation of double bonds of polyunsaturated fatty acids such as (14S)-hydroperoxy-docosahexaenoate/(14S)-HPDHA resulting in the formation of (13S,14S)-epoxy-DHA .

APPLICATION

To ensure optimal assay performance, AREX recommends conducting reagent titration tailored to each testing system for optimal detection results.

WB	1:500 - 1:1000
----	----------------

*Results are sample-specific. Please refer to your local assay conditions and test parameters for reference.

PRODUCT OVERVIEW

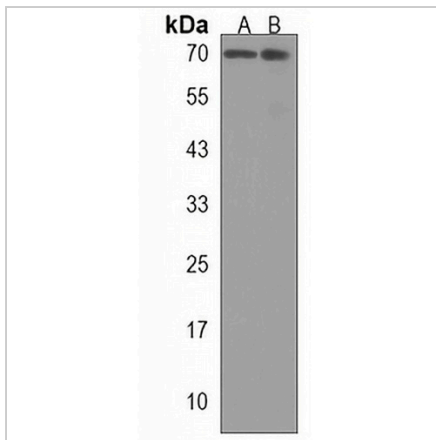
Description	Rabbit polyclonal antibody to ALOX12
Specificity	Recognizes endogenous levels of ALOX12 protein.
Antibody Type	Primary antibody
Immunogen	KLH-conjugated synthetic peptide encompassing a sequence within the C-terminal region of human ALOX12. The exact sequence is proprietary.
Purification	The antibody was purified by immunogen affinity chromatography.
Molecular Weight	Predicted: 75 kD; Observed: 70 kD
Form/Buffer	Liquid in 0.42% Potassium phosphate, 0.87% Sodium chloride, pH 7.3, 30% glycerol, and 0.01% sodium azide.
Alternative Names	12LO; LOG12; Arachidonate 12-lipoxygenase, 12S-type; 12S-LOX; 12S-lipoxygenase; Lipoxin synthase 12-LO; Platelet-type lipoxygenase 12
Gene Symbol	ALOX12
Entrez Gene	239(Human); 11684(Mouse)
SwissProt	P18054(Human); P39655(Mouse); F1LQ70(Rat)

*AREX continuously optimizes our products. Webpage content may not reflect the latest updates. For inquiries, please contact info@arexbio.com or your local distributor.

*Clone Number, Reactivity, Source/Host and Clonality can be found in the product name and Key Features section above.

DATASHEET**ALOX12 Rabbit Polyclonal Antibody**

CAT. NO. APA19021

DATA

Western blot analysis of ALOX12 expression in HeLa (A), rat spleen (B) whole cell lysates.
(Predicted band size: 75 kD; Observed band size: 70 kD)

STORAGE

Store at 4°C short term. For long term storage, store at -20°C, avoiding freeze/thaw cycles.

NOTE

For Research Use Only. Not for diagnostic, therapeutics, prophylactic or in vivo use.