

DATASHEET

GAL3ST1 Rabbit Polyclonal Antibody

CAT. NO. APA19023

KEY FEATURES

Target	GAL3ST1	Source / Host	Rabbit
Reactivity	Human, Mouse	Clonality	Polyclonal
Applications	WB	Conjugation	Unconjugated
Form / Buffer	Liquid in 0.42% Potassium phosphate, 0.87% Sodium chloride, pH 7.3, 30% glycerol, and 0.01% sodium azide.		Storage at -20°C

BACKGROUND

Catalyzes the transfer of a sulfate group to position 3 of non-reducing beta-galactosyl residues in glycerolipids and sphingolipids, therefore participates in the biosynthesis of sulfoglycolipids . Catalyzes the synthesis of galactosylceramide sulfate (sulfatide), a major lipid component of the myelin sheath and of monogalactosylalkylacylglycerol sulfate (seminolipid), present in spermatocytes . Seems to prefer beta-glycosides at the non-reducing termini of sugar chains attached to a lipid moiety . Also acts on lactosylceramide, galactosyl 1-alkyl-2-sn-glycerol and galactosyl diacylglycerol (in vitro) .

APPLICATION

To ensure optimal assay performance, AREX recommends conducting reagent titration tailored to each testing system for optimal detection results.

WB	1:500 - 1:1000
----	----------------

*Results are sample-specific. Please refer to your local assay conditions and test parameters for reference.

PRODUCT OVERVIEW

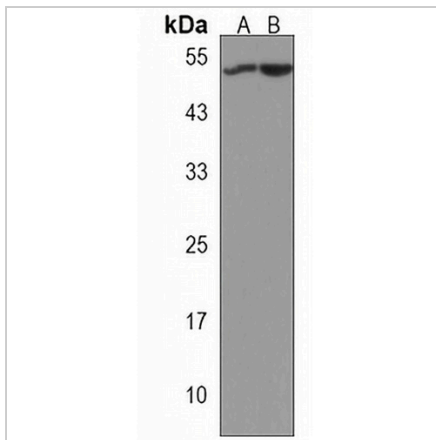
Description	Rabbit polyclonal antibody to GAL3ST1
Specificity	Recognizes endogenous levels of GAL3ST1 protein.
Antibody Type	Primary antibody
Immunogen	KLH-conjugated synthetic peptide encompassing a sequence within the Central region of human GAL3ST1. The exact sequence is proprietary.
Purification	The antibody was purified by immunogen affinity chromatography.
Molecular Weight	Predicted: 48 kD; Observed: 49 kD
Form/Buffer	Liquid in 0.42% Potassium phosphate, 0.87% Sodium chloride, pH 7.3, 30% glycerol, and 0.01% sodium azide.
Alternative Names	CST; Galactosylceramide sulfotransferase; GalCer sulfotransferase; 3'-phosphoadenosine-5'-phosphosulfate:GalCer sulfotransferase; 3'-phosphoadenylylsulfate:galactosylceramide 3'-sulfotransferase; Cerebroside sulfotransferase
Gene Symbol	GAL3ST1
Entrez Gene	9514(Human); 53897(Mouse)
SwissProt	Q99999(Human); Q9JHE4(Mouse)

*AREX continuously optimizes our products. Webpage content may not reflect the latest updates. For inquiries, please contact info@arexbio.com or your local distributor.

*Clone Number, Reactivity, Source/Host and Clonality can be found in the product name and Key Features section above.

DATASHEET**GAL3ST1 Rabbit Polyclonal Antibody**

CAT. NO. APA19023

DATA

Western blot analysis of GAL3ST1 expression in human kidney (A), mouse kidney (B) whole cell lysates. (Predicted band size: 48 kD; Observed band size: 49 kD)

STORAGE

Store at 4°C short term. For long term storage, store at -20°C, avoiding freeze/thaw cycles.

NOTE

For Research Use Only. Not for diagnostic, therapeutics, prophylactic or in vivo use.