

DATASHEET

ZFP36 Rabbit Polyclonal Antibody

CAT. NO. APA19026

KEY FEATURES

Target	ZFP36	Source / Host	Rabbit
Reactivity	Human	Clonality	Polyclonal
Applications	WB	Conjugation	Unconjugated
Form / Buffer	Liquid in 0.42% Potassium phosphate, 0.87% Sodium chloride, pH 7.3, 30% glycerol, and 0.01% sodium azide.		Storage at -20°C

BACKGROUND

Zinc-finger RNA-binding protein that destabilizes several cytoplasmic AU-rich element (ARE)-containing mRNA transcripts by promoting their poly(A) tail removal or deadenylation, and hence provide a mechanism for attenuating protein synthesis - containing mRNA transcripts by promoting their poly(A) tail removal or deadenylation, and hence provide a mechanism for attenuating protein synthesis . Acts as an 3'-untranslated region (UTR) ARE mRNA-binding adapter protein to communicate signaling events to the mRNA decay machinery . Recruits deadenylase CNOT7 (and probably the CCR4-NOT complex) via association with CNOT1, and hence promotes ARE-mediated mRNA deadenylation . Functions also by recruiting components of the cytoplasmic RNA decay machinery to the bound ARE-containing mRNAs .

APPLICATION

To ensure optimal assay performance, AREX recommends conducting reagent titration tailored to each testing system for optimal detection results.

WB	1:500 - 1:1000
----	----------------

*Results are sample-specific. Please refer to your local assay conditions and test parameters for reference.

PRODUCT OVERVIEW

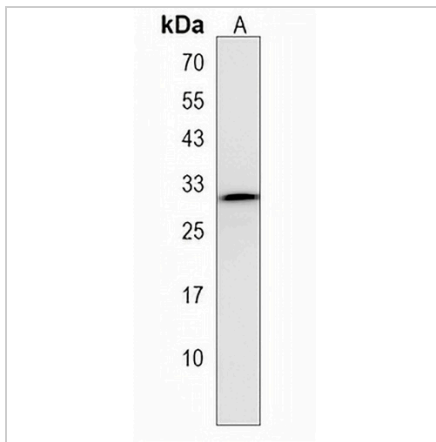
Description	Rabbit polyclonal antibody to ZFP36
Specificity	Recognizes endogenous levels of ZFP36 protein.
Antibody Type	Primary antibody
Immunogen	KLH-conjugated synthetic peptide encompassing a sequence within the Central region of human ZFP36. The exact sequence is proprietary.
Purification	The antibody was purified by immunogen affinity chromatography.
Molecular Weight	Predicted: 34 kD; Observed: 30 kD
Form/Buffer	Liquid in 0.42% Potassium phosphate, 0.87% Sodium chloride, pH 7.3, 30% glycerol, and 0.01% sodium azide.
Alternative Names	G0S24; RNF162A; TIS11A; TTP; Tristetraprolin; TTP; G0/G1 switch regulatory protein 24; Growth factor-inducible nuclear protein NUP475; Protein TIS11A; TIS11; Zinc finger protein 36 homolog; Zfp-36
Gene Symbol	ZFP36
Entrez Gene	7538(Human)
SwissProt	P26651(Human)

*AREX continuously optimizes our products. Webpage content may not reflect the latest updates. For inquiries, please contact info@arexbio.com or your local distributor.

*Clone Number, Reactivity, Source/Host and Clonality can be found in the product name and Key Features section above.

DATASHEET**ZFP36 Rabbit Polyclonal Antibody**

CAT. NO. APA19026

DATA

Western blot analysis of ZFP36 expression in WiDr (A) whole cell lysates. (Predicted band size: 34 kD; Observed band size: 30 kD)

STORAGE

Store at 4°C short term. For long term storage, store at -20°C, avoiding freeze/thaw cycles.

NOTE

For Research Use Only. Not for diagnostic, therapeutics, prophylactic or in vivo use.