

## DATASHEET

# IPMK Rabbit Polyclonal Antibody

CAT. NO. APA19034

### KEY FEATURES

Target	IPMK	Source / Host	Rabbit
Reactivity	Human	Clonality	Polyclonal
Applications	WB	Conjugation	Unconjugated
Form / Buffer	Liquid in 0.42% Potassium phosphate, 0.87% Sodium chloride, pH 7.3, 30% glycerol, and 0.01% sodium azide.		Storage at -20°C

### BACKGROUND

Inositol phosphate kinase with a broad substrate specificity . Phosphorylates inositol 1,4,5-trisphosphate (Ins(1,4,5)P3) first to inositol 1,3,4,5-tetrakisphosphate and then to inositol 1,3,4,5,6-pentakisphosphate (Ins(1,3,4,5,6)P5) . Phosphorylates inositol 1,3,4,6-tetrakisphosphate (Ins(1,3,4,6)P4) . Phosphorylates inositol 1,4,5,6-tetrakisphosphate (Ins(1,4,5,6)P4) . Phosphorylates glycerol-3-phospho-1D-myo-inositol 4,5-bisphosphate to glycerol-3-phospho-1D-myo-inositol 3,4,5-trisphosphate . Plays an important role in MLKL-mediated necroptosis via its role in the biosynthesis of inositol pentakisphosphate (InsP5) and inositol hexakisphosphate (InsP6).

### APPLICATION

To ensure optimal assay performance, AREX recommends conducting reagent titration tailored to each testing system for optimal detection results.

WB	1:500 - 1:1000
----	----------------

\*Results are sample-specific. Please refer to your local assay conditions and test parameters for reference.

### PRODUCT OVERVIEW

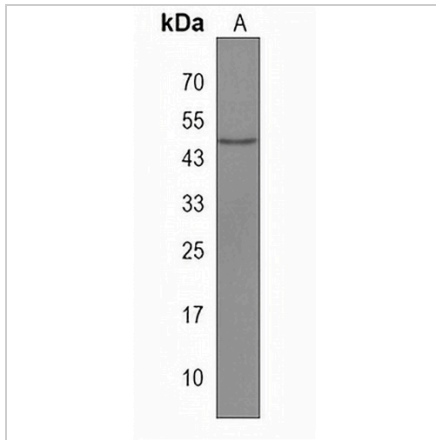
Description	Rabbit polyclonal antibody to IPMK
Specificity	Recognizes endogenous levels of IPMK protein.
Antibody Type	Primary antibody
Immunogen	KLH-conjugated synthetic peptide encompassing a sequence within the Central region of human IPMK. The exact sequence is proprietary.
Purification	The antibody was purified by immunogen affinity chromatography.
Molecular Weight	Predicted: 47 kD; Observed: 47 kD
Form/Buffer	Liquid in 0.42% Potassium phosphate, 0.87% Sodium chloride, pH 7.3, 30% glycerol, and 0.01% sodium azide.
Alternative Names	IMPk; Inositol polyphosphate multikinase; Inositol 1,3,4,6-tetrakisphosphate 5-kinase
Gene Symbol	IPMK
Entrez Gene	253430(Human)
SwissProt	Q8NFU5(Human)

\*AREX continuously optimizes our products. Webpage content may not reflect the latest updates. For inquiries, please contact [info@arexbio.com](mailto:info@arexbio.com) or your local distributor.

\*Clone Number, Reactivity, Source/Host and Clonality can be found in the product name and Key Features section above.

**DATASHEET****IPMK Rabbit Polyclonal Antibody**

CAT. NO. APA19034

**DATA**

Western blot analysis of IPMK expression in MCF7 (A) whole cell lysates. (Predicted band size: 47 kD; Observed band size: 47 kD)

**STORAGE**

Store at 4°C short term. For long term storage, store at -20°C, avoiding freeze/thaw cycles.

**NOTE**

For Research Use Only. Not for diagnostic, therapeutics, prophylactic or in vivo use.