

DATASHEET

DPP10 Rabbit Polyclonal Antibody

CAT. NO. APA19035

KEY FEATURES

Target	DPP10	Source / Host	Rabbit
Reactivity	Human, Mouse	Clonality	Polyclonal
Applications	WB, IHC	Conjugation	Unconjugated
Form / Buffer	Liquid in 0.42% Potassium phosphate, 0.87% Sodium chloride, pH 7.3, 30% glycerol, and 0.01% sodium azide.		Storage at-20°C

BACKGROUND

Promotes cell surface expression of the potassium channel KCND2 . Modulates the activity and gating characteristics of the potassium channel KCND2 . Has no dipeptidyl aminopeptidase activity .

APPLICATION

To ensure optimal assay performance, AREX recommends conducting reagent titration tailored to each testing system for optimal detection results.

WB	1:500 - 1:1000
IHC	1:50 - 1:200

*Results are sample-specific. Please refer to your local assay conditions and test parameters for reference.

PRODUCT OVERVIEW

Description	Rabbit polyclonal antibody to DPP10
Specificity	Recognizes endogenous levels of DPP10 protein.
Antibody Type	Primary antibody
Immunogen	KLH-conjugated synthetic peptide encompassing a sequence within the Central region of human DPP10. The exact sequence is proprietary.
Purification	The antibody was purified by immunogen affinity chromatography.
Molecular Weight	Predicted: 90 kD; Observed: 95 kD
Form/Buffer	Liquid in 0.42% Potassium phosphate, 0.87% Sodium chloride, pH 7.3, 30% glycerol, and 0.01% sodium azide.
Alternative Names	DPRP3; KIAA1492; Inactive dipeptidyl peptidase 10; Dipeptidyl peptidase IV-related protein 3; DPRP-3; Dipeptidyl peptidase X; DPP X; Dipeptidyl peptidase-like protein 2; DPL2
Gene Symbol	DPP10
Entrez Gene	57628(Human); 269109(Mouse)
SwissProt	Q8N608(Human); Q6NXK7(Mouse)

*AREX continuously optimizes our products. Webpage content may not reflect the latest updates. For inquiries, please contact info@arexbio.com or your local distributor.

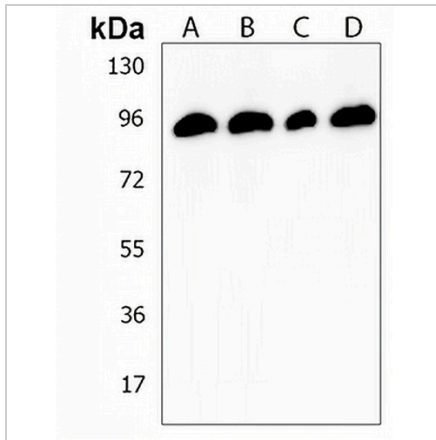
*Clone Number, Reactivity, Source/Host and Clonality can be found in the product name and Key Features section above.

DATASHEET

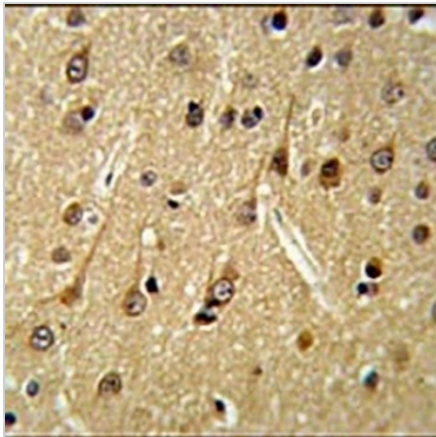
DPP10 Rabbit Polyclonal Antibody

CAT. NO. APA19035

DATA



Western blot analysis of DPP10 expression in Y79 (A), MDAMB231 (B), mouse liver (C), mouse brain (D) whole cell lysates. (Predicted band size: 90 kD; Observed band size: 95 kD)



Immunohistochemical analysis of DPP10 staining in human brain formalin fixed paraffin embedded tissue section. The section was pre-treated using heat mediated antigen retrieval with sodium citrate buffer (pH 6.0). The section was then incubated with the antibody at room temperature and detected using an HRP conjugated compact polymer system. DAB was used as the chromogen. The section was then counterstained with haematoxylin and mounted with DPX.

STORAGE

Store at 4°C short term. For long term storage, store at -20°C, avoiding freeze/thaw cycles.

NOTE

For Research Use Only. Not for diagnostic, therapeutics, prophylactic or in vivo use.