

DATASHEET

HIST1H1C Rabbit Polyclonal Antibody

CAT. NO. APA19052

KEY FEATURES

Target	HIST1H1C	Source / Host	Rabbit
Reactivity	Human	Clonality	Polyclonal
Applications	WB	Conjugation	Unconjugated
Form / Buffer	Liquid in 0.42% Potassium phosphate, 0.87% Sodium chloride, pH 7.3, 30% glycerol, and 0.01% sodium azide.		Storage at -20°C

BACKGROUND

Histone H1 protein binds to linker DNA between nucleosomes forming the macromolecular structure known as the chromatin fiber. Histone H1-2 is required for the condensation of nucleosome chains into higher-order structured fibers. Compared to other histone H1 variants, H1-2 plays an essential role in nucleosome condensation: its absence leads to global chromatin decompaction, which is not observed when depleting other histone H1 variants. Histone H1-2 also acts as a histone reader: specifically recognizes and binds histone H3 trimethylated at 'lys-27' (H3K27me3). Histones H1 also promote formation of the H3K27me3 mark by the PRC2/EED-EZH2 complex, possibly by facilitating restoration of H3K27me3 post-replication.

APPLICATION

To ensure optimal assay performance, AREX recommends conducting reagent titration tailored to each testing system for optimal detection results.

WB	1:500 - 1:1000
----	----------------

*Results are sample-specific. Please refer to your local assay conditions and test parameters for reference.

PRODUCT OVERVIEW

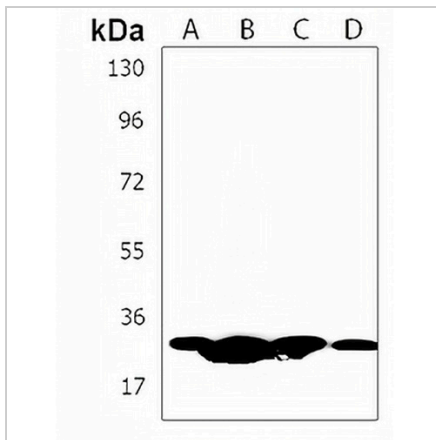
Description	Rabbit polyclonal antibody to HIST1H1C
Specificity	Recognizes endogenous levels of HIST1H1C protein.
Antibody Type	Primary antibody
Immunogen	KLH-conjugated synthetic peptide encompassing a sequence within the Central region of human HIST1H1C. The exact sequence is proprietary.
Purification	The antibody was purified by immunogen affinity chromatography.
Molecular Weight	Predicted: 21 kD; Observed: 30 kD
Form/Buffer	Liquid in 0.42% Potassium phosphate, 0.87% Sodium chloride, pH 7.3, 30% glycerol, and 0.01% sodium azide.
Alternative Names	H1F2; Histone H1.2; Histone H1c; Histone H1d; Histone H1s-1
Gene Symbol	HIST1H1C
Entrez Gene	3006(Human)
SwissProt	P16403(Human)

*AREX continuously optimizes our products. Webpage content may not reflect the latest updates. For inquiries, please contact info@arexbio.com or your local distributor.

*Clone Number, Reactivity, Source/Host and Clonality can be found in the product name and Key Features section above.

DATASHEET**HIST1H1C Rabbit Polyclonal Antibody**

CAT. NO. APA19052

DATA

Western blot analysis of HIST1H1C expression in HeLa (A), A375 (B), 293 (C), HUVEC (D) whole cell lysates. (Predicted band size: 21 kD; Observed band size: 30 kD)

STORAGE

Store at 4°C short term. For long term storage, store at -20°C, avoiding freeze/thaw cycles.

NOTE

For Research Use Only. Not for diagnostic, therapeutics, prophylactic or in vivo use.