

## DATASHEET

# BEST2 Rabbit Polyclonal Antibody

CAT. NO. APA19060

### KEY FEATURES

Target	BEST2	Source / Host	Rabbit
Reactivity	Human	Clonality	Polyclonal
Applications	WB, IHC	Conjugation	Unconjugated
Form / Buffer	Liquid in 0.42% Potassium phosphate, 0.87% Sodium chloride, pH 7.3, 30% glycerol, and 0.01% sodium azide.		Storage at -20°C

### BACKGROUND

Ligand-gated anion channel that allows the movement of anions across cell membranes when activated by calcium (Ca<sup>2+</sup>). Transports a large specter of anions, namely mediates the movement of chloride, L-glutamate and iodide. Calcium-binding triggers the dilation of the aperture, but calcium-dependent gating is only effective when the size of the passing anion is bigger than the closed aperture. Mediates the calcium-activated hydrogencarbonate movement and participates in colonic hydrogencarbonate secretion concomitant with mucin secretion.

### APPLICATION

To ensure optimal assay performance, AREX recommends conducting reagent titration tailored to each testing system for optimal detection results.

WB	1:500 - 1:1000
IHC	1:50 - 1:200

\*Results are sample-specific. Please refer to your local assay conditions and test parameters for reference.

### PRODUCT OVERVIEW

Description	Rabbit polyclonal antibody to BEST2
Specificity	Recognizes endogenous levels of BEST2 protein.
Antibody Type	Primary antibody
Immunogen	KLH-conjugated synthetic peptide encompassing a sequence within the C-terminal region of human BEST2. The exact sequence is proprietary.
Purification	The antibody was purified by immunogen affinity chromatography.
Molecular Weight	Predicted: 57 kD; Observed: 70 kD
Form/Buffer	Liquid in 0.42% Potassium phosphate, 0.87% Sodium chloride, pH 7.3, 30% glycerol, and 0.01% sodium azide.
Alternative Names	VMD2L1; Bestrophin-2; Vitelliform macular dystrophy 2-like protein 1
Gene Symbol	BEST2
Entrez Gene	54831(Human)
SwissProt	Q8NFU1(Human)

\*AREX continuously optimizes our products. Webpage content may not reflect the latest updates. For inquiries, please contact [info@arexbio.com](mailto:info@arexbio.com) or your local distributor.

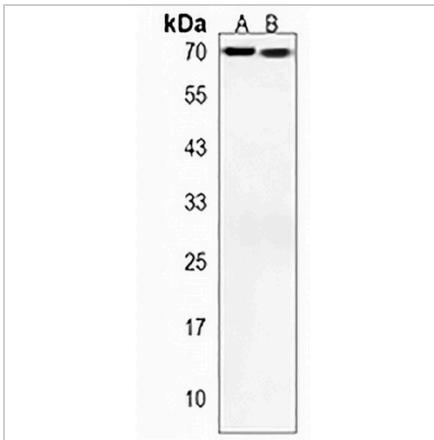
\*Clone Number, Reactivity, Source/Host and Clonality can be found in the product name and Key Features section above.

**DATASHEET**

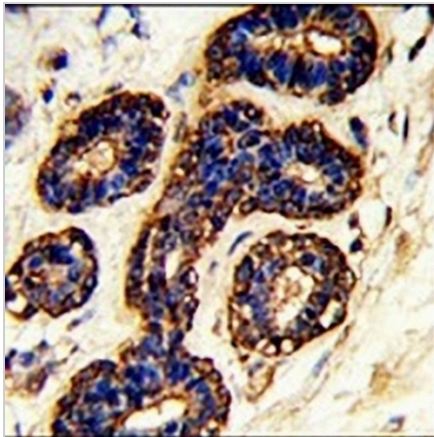
**BEST2 Rabbit Polyclonal Antibody**

CAT. NO. APA19060

**DATA**



Western blot analysis of BEST2 expression in MDAMB435 (A), MDAMB231 (B) whole cell lysates. (Predicted band size: 57 kD; Observed band size: 70 kD)



Immunohistochemical analysis of BEST2 staining in human breast carcinoma formalin fixed paraffin embedded tissue section. The section was pre-treated using heat mediated antigen retrieval with sodium citrate buffer (pH 6.0). The section was then incubated with the antibody at room temperature and detected using an HRP conjugated compact polymer system. DAB was used as the chromogen. The section was then counterstained with haematoxylin and mounted with DPX.

**STORAGE**

Store at 4°C short term. For long term storage, store at -20°C, avoiding freeze/thaw cycles.

**NOTE**

For Research Use Only. Not for diagnostic, therapeutics, prophylactic or in vivo use.