

DATASHEET

Selenoprotein T Rabbit Polyclonal Antibody

CAT. NO. APA19066

KEY FEATURES

Target	Selenoprotein T	Source / Host	Rabbit
Reactivity	Human	Clonality	Polyclonal
Applications	WB, FC	Conjugation	Unconjugated
Form / Buffer	Liquid in 0.42% Potassium phosphate, 0.87% Sodium chloride, pH 7.3, 30% glycerol, and 0.01% sodium azide.		Storage at-20°C

BACKGROUND

Selenoprotein with thioredoxin reductase-like oxidoreductase activity . Protects dopaminergic neurons against oxidative stress and cell death . Involved in ADCYAP1/PACAP-induced calcium mobilization and neuroendocrine secretion . Plays a role in fibroblast anchorage and redox regulation . In gastric smooth muscle, modulates the contraction processes through the regulation of calcium release and MYLK activation . In pancreatic islets, involved in the control of glucose homeostasis, contributes to prolonged ADCYAP1/PACAP-induced insulin secretion .

APPLICATION

To ensure optimal assay performance, AREX recommends conducting reagent titration tailored to each testing system for optimal detection results.

WB	1:500 - 1:1000
FC	1:10 - 1:50

*Results are sample-specific. Please refer to your local assay conditions and test parameters for reference.

PRODUCT OVERVIEW

Description	Rabbit polyclonal antibody to Selenoprotein T
Specificity	Recognizes endogenous levels of Selenoprotein T protein.
Antibody Type	Primary antibody
Immunogen	KLH-conjugated synthetic peptide encompassing a sequence within the N-terminal region of human Selenoprotein T. The exact sequence is proprietary.
Purification	The antibody was purified by immunogen affinity chromatography.
Molecular Weight	Predicted: 22 kD; Observed: 28 kD
Form/Buffer	Liquid in 0.42% Potassium phosphate, 0.87% Sodium chloride, pH 7.3, 30% glycerol, and 0.01% sodium azide.
Alternative Names	Selenoprotein T; SelT
Gene Symbol	SELT
Entrez Gene	51714(Human)
SwissProt	P62341(Human)

*AREX continuously optimizes our products. Webpage content may not reflect the latest updates. For inquiries, please contact info@arexbio.com or your local distributor.

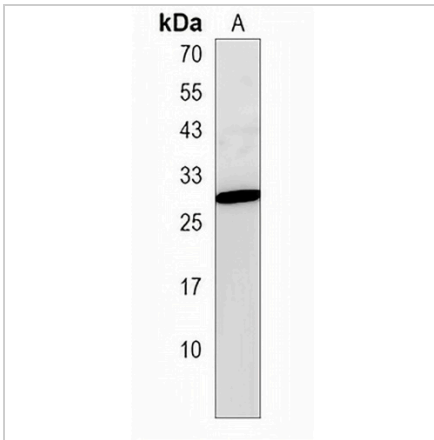
*Clone Number, Reactivity, Source/Host and Clonality can be found in the product name and Key Features section above.

DATASHEET

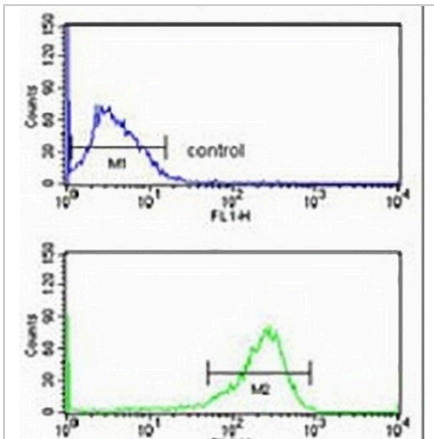
Selenoprotein T Rabbit Polyclonal Antibody

CAT. NO. APA19066

DATA



Western blot analysis of Selenoprotein T expression in MCF7 (A) whole cell lysates. (Predicted band size: 22 kD; Observed band size: 28 kD)



Flow cytometric analysis of MCF7 cells using Anti-Selenoprotein T Antibody. The cells were fixed with 2% paraformaldehyde (10 min) and then permeabilized with 90% methanol for 10 min. The cells were incubated in 2% bovine serum albumin to block non-specific protein-protein interactions followed by the antibody at 37 °C for 60 min. The secondary antibody Goat Anti-Rabbit IgG (H&L) - AREX® Fluor 488 was incubated at 37 °C for 40 min. Isotype control antibody (blue line) was used under the same condition.

STORAGE

Store at 4°C short term. For long term storage, store at -20°C, avoiding freeze/thaw cycles.

NOTE

For Research Use Only. Not for diagnostic, therapeutics, prophylactic or in vivo use.