

**DATASHEET**

**ENTPD2 Rabbit Polyclonal Antibody**

CAT. NO. APA19071

**KEY FEATURES**

Target	ENTPD2	Source / Host	Rabbit
Reactivity	Human	Clonality	Polyclonal
Applications	WB	Conjugation	Unconjugated
Form / Buffer	Liquid in 0.42% Potassium phosphate, 0.87% Sodium chloride, pH 7.3, 30% glycerol, and 0.01% sodium azide.		Storage at -20°C

**BACKGROUND**

Catalyzes the hydrolysis of nucleoside triphosphates (NTPs) and diphosphates (NDPs), with a marked preference for triphosphonucleosides over diphosphonucleosides and diphosphates (NDPs), with a marked preference for triphosphonucleosides over diphosphonucleosides. The enzyme sequentially removes phosphate groups in two successive steps, converting NTPs to nucleoside monophosphates (NMPs) via NDP intermediates. This activity contributes to the regulation of extracellular nucleotides levels. ATP hydrolysis is characterized by fast ADP accumulation and delayed AMP formation, reflecting limited ADP hydrolase activity. Hydrolyzes ADP and UDP only to a marginal extent, and does not hydrolyze AMP.

**APPLICATION**

To ensure optimal assay performance, AREX recommends conducting reagent titration tailored to each testing system for optimal detection results.

WB	1:500 - 1:1000
----	----------------

\*Results are sample-specific. Please refer to your local assay conditions and test parameters for reference.

**PRODUCT OVERVIEW**

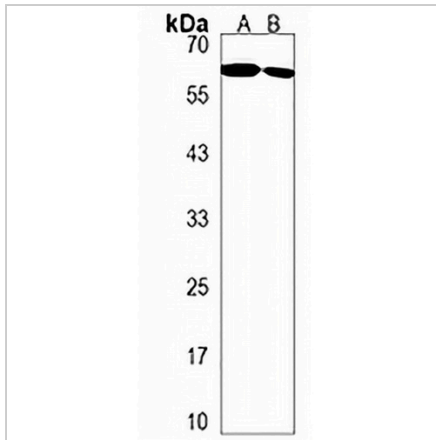
Description	Rabbit polyclonal antibody to ENTPD2
Specificity	Recognizes endogenous levels of ENTPD2 protein.
Antibody Type	Primary antibody
Immunogen	KLH-conjugated synthetic peptide encompassing a sequence within the N-terminal region of human ENTPD2. The exact sequence is proprietary.
Purification	The antibody was purified by immunogen affinity chromatography.
Molecular Weight	Predicted: 53 kD; Observed: 60 kD
Form/Buffer	Liquid in 0.42% Potassium phosphate, 0.87% Sodium chloride, pH 7.3, 30% glycerol, and 0.01% sodium azide.
Alternative Names	CD39L1; Ectonucleoside triphosphate diphosphohydrolase 2; NTPDase 2; CD39 antigen-like 1; Ecto-ATP diphosphohydrolase 2; Ecto-ATPDase 2; Ecto-ATPase 2
Gene Symbol	ENTPD2
Entrez Gene	954(Human)
SwissProt	Q9Y5L3(Human)

\*AREX continuously optimizes our products. Webpage content may not reflect the latest updates. For inquiries, please contact [info@arexbio.com](mailto:info@arexbio.com) or your local distributor.

\*Clone Number, Reactivity, Source/Host and Clonality can be found in the product name and Key Features section above.

**DATASHEET****ENTPD2 Rabbit Polyclonal Antibody**

CAT. NO. APA19071

**DATA**

Western blot analysis of ENTPD2 expression in mouse testis (A), T47D (B) whole cell lysates. (Predicted band size: 53 kD; Observed band size: 60 kD)

**STORAGE**

Store at 4°C short term. For long term storage, store at -20°C, avoiding freeze/thaw cycles.

**NOTE**

For Research Use Only. Not for diagnostic, therapeutics, prophylactic or in vivo use.