

DATASHEET

YIPF5 Rabbit Polyclonal Antibody

CAT. NO. APA19083

KEY FEATURES

Target	YIPF5	Source / Host	Rabbit
Reactivity	Human, Mouse	Clonality	Polyclonal
Applications	WB, IHC	Conjugation	Unconjugated
Form / Buffer	Liquid in 0.42% Potassium phosphate, 0.87% Sodium chloride, pH 7.3, 30% glycerol, and 0.01% sodium azide.		Storage at-20°C

BACKGROUND

Plays a role in transport between endoplasmic reticulum and Golgi. In pancreatic beta cells, required to transport proinsulin from endoplasmic reticulum into the Golgi.

APPLICATION

To ensure optimal assay performance, AREX recommends conducting reagent titration tailored to each testing system for optimal detection results.

WB	1:500 - 1:1000
IHC	1:50 - 1:200

*Results are sample-specific. Please refer to your local assay conditions and test parameters for reference.

PRODUCT OVERVIEW

Description	Rabbit polyclonal antibody to YIPF5
Specificity	Recognizes endogenous levels of YIPF5 protein.
Antibody Type	Primary antibody
Immunogen	KLH-conjugated synthetic peptide encompassing a sequence within the N-terminal region of human YIPF5. The exact sequence is proprietary.
Purification	The antibody was purified by immunogen affinity chromatography.
Molecular Weight	Predicted: 27 kD; Observed: 28 kD
Form/Buffer	Liquid in 0.42% Potassium phosphate, 0.87% Sodium chloride, pH 7.3, 30% glycerol, and 0.01% sodium azide.
Alternative Names	FINGER5; YIP1A; Protein YIPF5; Five-pass transmembrane protein localizing in the Golgi apparatus and the endoplasmic reticulum 5; Smooth muscle cell-associated protein 5; SMAP-5; YIP1 family member 5; YPT-interacting protein 1 A
Gene Symbol	YIPF5
Entrez Gene	81555(Human); 67180(Mouse)
SwissProt	Q969M3(Human); Q9EQQ2(Mouse)

*AREX continuously optimizes our products. Webpage content may not reflect the latest updates. For inquiries, please contact info@arexbio.com or your local distributor.

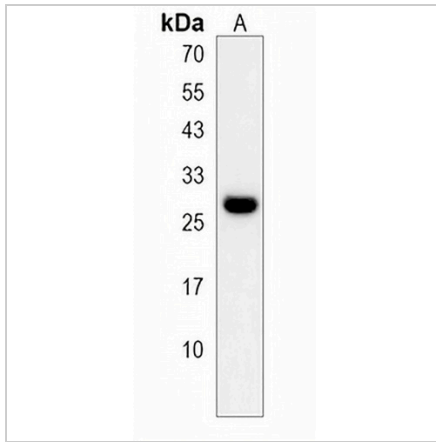
*Clone Number, Reactivity, Source/Host and Clonality can be found in the product name and Key Features section above.

DATASHEET

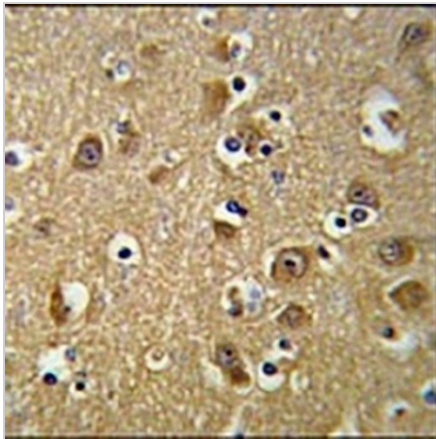
YIPF5 Rabbit Polyclonal Antibody

CAT. NO. APA19083

DATA



Western blot analysis of YIPF5 expression in MDAMB231 (A) whole cell lysates. (Predicted band size: 27 kD; Observed band size: 28 kD)



Immunohistochemical analysis of YIPF5 staining in human brain formalin fixed paraffin embedded tissue section. The section was pre-treated using heat mediated antigen retrieval with sodium citrate buffer (pH 6.0). The section was then incubated with the antibody at room temperature and detected using an HRP conjugated compact polymer system. DAB was used as the chromogen. The section was then counterstained with haematoxylin and mounted with DPX.

STORAGE

Store at 4°C short term. For long term storage, store at -20°C, avoiding freeze/thaw cycles.

NOTE

For Research Use Only. Not for diagnostic, therapeutics, prophylactic or in vivo use.