

## DATASHEET

# ECHDC1 Rabbit Polyclonal Antibody

CAT. NO. APA19093

### KEY FEATURES

Target	ECHDC1	Source / Host	Rabbit
Reactivity	Human, Mouse	Clonality	Polyclonal
Applications	WB	Conjugation	Unconjugated
Form / Buffer	Liquid in 0.42% Potassium phosphate, 0.87% Sodium chloride, pH 7.3, 30% glycerol, and 0.01% sodium azide.		Storage at -20°C

### BACKGROUND

Decarboxylates ethylmalonyl-CoA, a potentially toxic metabolite, to form butyryl-CoA, suggesting it might be involved in metabolite proofreading. Acts preferentially on (S)-ethylmalonyl-CoA but also has some activity on the (R)-isomer. Also has methylmalonyl-CoA decarboxylase activity at lower level.

### APPLICATION

To ensure optimal assay performance, AREX recommends conducting reagent titration tailored to each testing system for optimal detection results.

WB	1:500 - 1:1000
----	----------------

\*Results are sample-specific. Please refer to your local assay conditions and test parameters for reference.

### PRODUCT OVERVIEW

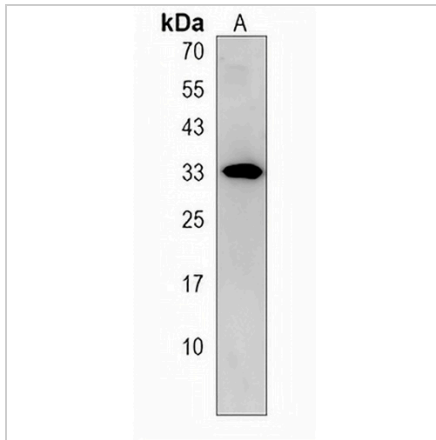
Description	Rabbit polyclonal antibody to ECHDC1
Specificity	Recognizes endogenous levels of ECHDC1 protein.
Antibody Type	Primary antibody
Immunogen	KLH-conjugated synthetic peptide encompassing a sequence within the C-terminal region of human ECHDC1. The exact sequence is proprietary.
Purification	The antibody was purified by immunogen affinity chromatography.
Molecular Weight	Predicted: 33 kD; Observed: 33 kD
Form/Buffer	Liquid in 0.42% Potassium phosphate, 0.87% Sodium chloride, pH 7.3, 30% glycerol, and 0.01% sodium azide.
Alternative Names	Ethylmalonyl-CoA decarboxylase; Enoyl-CoA hydratase domain-containing protein 1; Methylmalonyl-CoA decarboxylase; MMCD
Gene Symbol	ECHDC1
Entrez Gene	55862(Human); 52665(Mouse)
SwissProt	Q9NTX5(Human); Q9D9V3(Mouse)

\*AREX continuously optimizes our products. Webpage content may not reflect the latest updates. For inquiries, please contact [info@arexbio.com](mailto:info@arexbio.com) or your local distributor.

\*Clone Number, Reactivity, Source/Host and Clonality can be found in the product name and Key Features section above.

**DATASHEET****ECHDC1 Rabbit Polyclonal Antibody**

CAT. NO. APA19093

**DATA**

Western blot analysis of ECHDC1 expression in mouse liver (A) whole cell lysates.  
(Predicted band size: 33 kD; Observed band size: 33 kD)

**STORAGE**

Store at 4°C short term. For long term storage, store at -20°C, avoiding freeze/thaw cycles.

**NOTE**

For Research Use Only. Not for diagnostic, therapeutics, prophylactic or in vivo use.