

**DATASHEET**

**GSPT2 Rabbit Polyclonal Antibody**

CAT. NO. APA19094

**KEY FEATURES**

Target	GSPT2	Source / Host	Rabbit
Reactivity	Human, Mouse	Clonality	Polyclonal
Applications	WB	Conjugation	Unconjugated
Form / Buffer	Liquid in 0.42% Potassium phosphate, 0.87% Sodium chloride, pH 7.3, 30% glycerol, and 0.01% sodium azide.		Storage at -20°C

**BACKGROUND**

GTPase component of the eRF1-eRF3-GTP ternary complex, a ternary complex that mediates translation termination in response to the termination codons UAA, UAG and UGA . GSPT2/ERF3B mediates ETF1/ERF1 delivery to stop codons: The eRF1-eRF3-GTP complex binds to a stop codon in the ribosomal A-site . GTP hydrolysis by GSPT2/ERF3B induces a conformational change that leads to its dissociation, permitting ETF1/ERF1 to accommodate fully in the A-site . Component of the transient SURF complex which recruits UPF1 to stalled ribosomes in the context of nonsense-mediated decay (NMD) of mRNAs containing premature stop codons .

**APPLICATION**

To ensure optimal assay performance, AREX recommends conducting reagent titration tailored to each testing system for optimal detection results.

WB	1:500 - 1:1000
----	----------------

\*Results are sample-specific. Please refer to your local assay conditions and test parameters for reference.

**PRODUCT OVERVIEW**

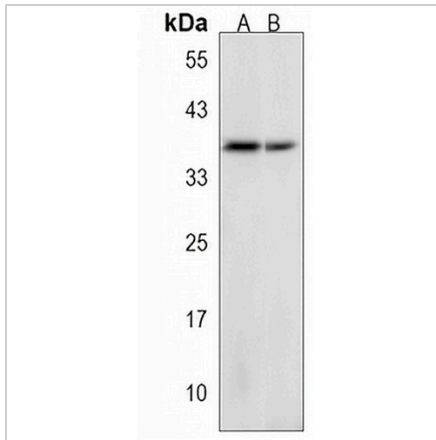
Description	Rabbit polyclonal antibody to GSPT2
Specificity	Recognizes endogenous levels of GSPT2 protein.
Antibody Type	Primary antibody
Immunogen	KLH-conjugated synthetic peptide encompassing a sequence within the Central region of human GSPT2. The exact sequence is proprietary.
Purification	The antibody was purified by immunogen affinity chromatography.
Molecular Weight	Predicted: 68 kD; Observed: 38 kD
Form/Buffer	Liquid in 0.42% Potassium phosphate, 0.87% Sodium chloride, pH 7.3, 30% glycerol, and 0.01% sodium azide.
Alternative Names	ERF3B; Eukaryotic peptide chain release factor GTP-binding subunit ERF3B; Eukaryotic peptide chain release factor subunit 3b; eRF3b; G1 to S phase transition protein 2 homolog
Gene Symbol	GSPT2
Entrez Gene	23708(Human); 14853(Mouse)
SwissProt	Q8IYD1(Human); Q149F3(Mouse)

\*AREX continuously optimizes our products. Webpage content may not reflect the latest updates. For inquiries, please contact [info@arexbio.com](mailto:info@arexbio.com) or your local distributor.

\*Clone Number, Reactivity, Source/Host and Clonality can be found in the product name and Key Features section above.

**DATASHEET****GSPT2 Rabbit Polyclonal Antibody**

CAT. NO. APA19094

**DATA**

Western blot analysis of GSPT2 expression in 293 (A), mouse stomach (B) whole cell lysates. (Predicted band size: 68 kD; Observed band size: 38 kD)

**STORAGE**

Store at 4°C short term. For long term storage, store at -20°C, avoiding freeze/thaw cycles.

**NOTE**

For Research Use Only. Not for diagnostic, therapeutics, prophylactic or in vivo use.