

DATASHEET

ADPRHL2 Rabbit Polyclonal Antibody

CAT. NO. APA19098

KEY FEATURES

Target	ADPRHL2	Source / Host	Rabbit
Reactivity	Human	Clonality	Polyclonal
Applications	WB, FC	Conjugation	Unconjugated
Form / Buffer	Liquid in 0.42% Potassium phosphate, 0.87% Sodium chloride, pH 7.3, 30% glycerol, and 0.01% sodium azide.		Storage at-20°C

BACKGROUND

ADP-ribosylhydrolase that preferentially hydrolyzes the scissile alpha-O-linkage attached to the anomeric C1" position of ADP-ribose and acts on different substrates, such as proteins ADP-ribosylated on serine and threonine, free poly(ADP-ribose) and O-acetyl-ADP-D-ribose and O-acetyl-ADP-D-ribose . Specifically acts as a serine mono-ADP-ribosylhydrolase by mediating the removal of mono-ADP-ribose attached to serine residues on proteins, thereby playing a key role in DNA damage response . Serine ADP-ribosylation of proteins constitutes the primary form of ADP-ribosylation of proteins in response to DNA damage . Does not hydrolyze ADP-ribosyl-arginine, -cysteine, -diphthamide, or -asparagine bonds .

APPLICATION

To ensure optimal assay performance, AREX recommends conducting reagent titration tailored to each testing system for optimal detection results.

WB	1:500 - 1:1000
FC	1:10 - 1:50

*Results are sample-specific. Please refer to your local assay conditions and test parameters for reference.

PRODUCT OVERVIEW

Description	Rabbit polyclonal antibody to ADPRHL2
Specificity	Recognizes endogenous levels of ADPRHL2 protein.
Antibody Type	Primary antibody
Immunogen	KLH-conjugated synthetic peptide encompassing a sequence within the N-terminal region of human ADPRHL2. The exact sequence is proprietary.
Purification	The antibody was purified by immunogen affinity chromatography.
Molecular Weight	Predicted: 38 kD; Observed: 38 kD
Form/Buffer	Liquid in 0.42% Potassium phosphate, 0.87% Sodium chloride, pH 7.3, 30% glycerol, and 0.01% sodium azide.
Alternative Names	ARH3; Poly(ADP-ribose) glycohydrolase ARH3; ADP-ribosylhydrolase 3; [Protein ADP-ribosylarginine] hydrolase-like protein 2
Gene Symbol	ADPRHL2
Entrez Gene	54936(Human)
SwissProt	Q9NX46(Human)

*AREX continuously optimizes our products. Webpage content may not reflect the latest updates. For inquiries, please contact info@arexbio.com or your local distributor.

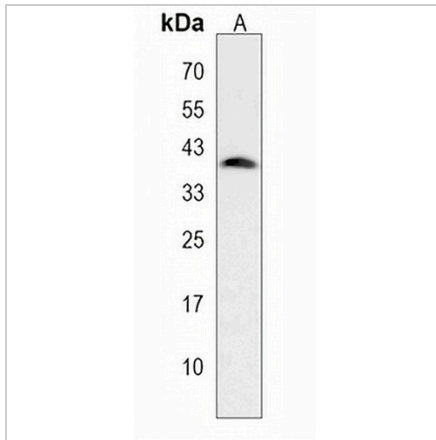
*Clone Number, Reactivity, Source/Host and Clonality can be found in the product name and Key Features section above.

DATASHEET

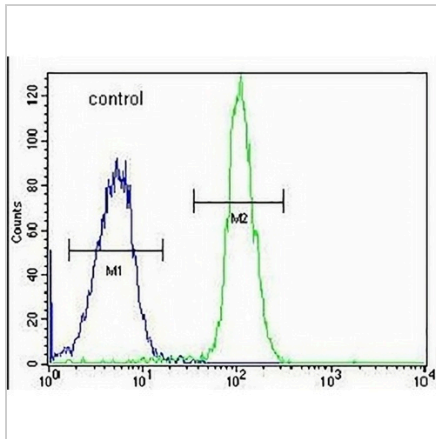
ADPRHL2 Rabbit Polyclonal Antibody

CAT. NO. APA19098

DATA



Western blot analysis of ADPRHL2 expression in HeLa (A) whole cell lysates. (Predicted band size: 38 kD; Observed band size: 38 kD)



Flow cytometric analysis of HeLa cells using Anti-ADPRHL2 Antibody. The cells were fixed with 2% paraformaldehyde (10 min) and then permeabilized with 90% methanol for 10 min. The cells were incubated in 2% bovine serum albumin to block non-specific protein-protein interactions followed by the antibody at 37 °C for 60 min. The secondary antibody Goat Anti-Rabbit IgG (H&L) - AREX® Fluor 488 was incubated at 37 °C for 40 min. Isotype control antibody (blue line) was used under the same condition.

STORAGE

Store at 4°C short term. For long term storage, store at -20°C, avoiding freeze/thaw cycles.

NOTE

For Research Use Only. Not for diagnostic, therapeutics, prophylactic or in vivo use.