

**DATASHEET**

**MAPK1IP1L Rabbit Polyclonal Antibody**

CAT. NO. APA19100

**KEY FEATURES**

Target	MAPK1IP1L	Source / Host	Rabbit
Reactivity	Human	Clonality	Polyclonal
Applications	WB, IHC	Conjugation	Unconjugated
Form / Buffer	Liquid in 0.42% Potassium phosphate, 0.87% Sodium chloride, pH 7.3, 30% glycerol, and 0.01% sodium azide.		Storage at -20°C

**BACKGROUND**

mitogen-activated protein kinase 1 interacting protein 1 like. Also known as: MAPK-interacting and spindle-stabilizing protein-like; MAPK-interacting and spindle-stabilizing protein.

**APPLICATION**

To ensure optimal assay performance, AREX recommends conducting reagent titration tailored to each testing system for optimal detection results.

WB	1:500 - 1:1000
IHC	1:50 - 1:200

\*Results are sample-specific. Please refer to your local assay conditions and test parameters for reference.

**PRODUCT OVERVIEW**

Description	Rabbit polyclonal antibody to MAPK1IP1L
Specificity	Recognizes endogenous levels of MAPK1IP1L protein.
Antibody Type	Primary antibody
Immunogen	KLH-conjugated synthetic peptide encompassing a sequence within the Central region of human MAPK1IP1L. The exact sequence is proprietary.
Purification	The antibody was purified by immunogen affinity chromatography.
Molecular Weight	Predicted: 24 kD; Observed: 32 kD
Form/Buffer	Liquid in 0.42% Potassium phosphate, 0.87% Sodium chloride, pH 7.3, 30% glycerol, and 0.01% sodium azide.
Alternative Names	C14orf32; MAPK-interacting and spindle-stabilizing protein-like; Mitogen-activated protein kinase 1-interacting protein 1-like
Gene Symbol	MAPK1IP1L
Entrez Gene	93487(Human)
SwissProt	Q8NDC0(Human)

\*AREX continuously optimizes our products. Webpage content may not reflect the latest updates. For inquiries, please contact [info@arexbio.com](mailto:info@arexbio.com) or your local distributor.

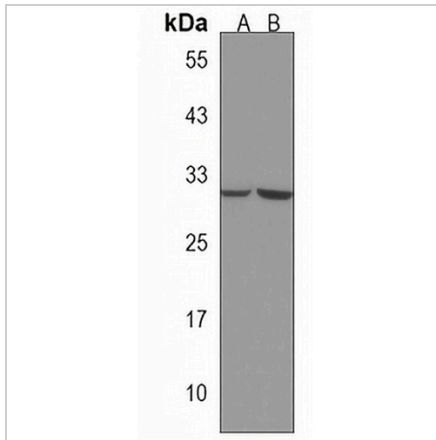
\*Clone Number, Reactivity, Source/Host and Clonality can be found in the product name and Key Features section above.

**DATASHEET**

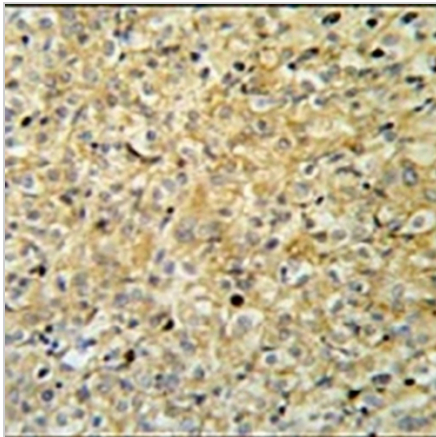
**MAPK1IP1L Rabbit Polyclonal Antibody**

CAT. NO. APA19100

**DATA**



Western blot analysis of MAPK1IP1L expression in U251MG (A), Y79 (B) whole cell lysates. (Predicted band size: 24 kD; Observed band size: 32 kD)



Immunohistochemical analysis of MAPK1IP1L staining in human kidney carcinoma formalin fixed paraffin embedded tissue section. The section was pre-treated using heat mediated antigen retrieval with sodium citrate buffer (pH 6.0). The section was then incubated with the antibody at room temperature and detected using an HRP conjugated compact polymer system. DAB was used as the chromogen. The section was then counterstained with haematoxylin and mounted with DPX.

**STORAGE**

Store at 4°C short term. For long term storage, store at -20°C, avoiding freeze/thaw cycles.

**NOTE**

For Research Use Only. Not for diagnostic, therapeutics, prophylactic or in vivo use.