

DATASHEET
Artemis Rabbit Polyclonal Antibody
CAT. NO. APA19101
KEY FEATURES

Target	Artemis	Source / Host	Rabbit
Reactivity	Human, Mouse	Clonality	Polyclonal
Applications	WB	Conjugation	Unconjugated
Form / Buffer	Liquid in 0.42% Potassium phosphate, 0.87% Sodium chloride, pH 7.3, 30% glycerol, and 0.01% sodium azide.		Storage at -20°C

BACKGROUND

Nuclease involved in DNA non-homologous end joining (NHEJ); required for double-strand break repair and V(D)J recombination ; required for double-strand break repair and V(D)J recombination . Required for V(D)J recombination, the process by which exons encoding the antigen-binding domains of immunoglobulins and T-cell receptor proteins are assembled from individual V, (D), and J gene segments . V(D)J recombination is initiated by the lymphoid specific RAG endonuclease complex, which generates site specific DNA double strand breaks (DSBs) . These DSBs present two types of DNA end structures: hairpin sealed coding ends and phosphorylated blunt signal ends . These ends are independently repaired by the non homologous end joining (NHEJ) pathway to form coding and signal joints respectively .

APPLICATION

To ensure optimal assay performance, AREX recommends conducting reagent titration tailored to each testing system for optimal detection results.

WB	1:500 - 1:1000
----	----------------

*Results are sample-specific. Please refer to your local assay conditions and test parameters for reference.

PRODUCT OVERVIEW

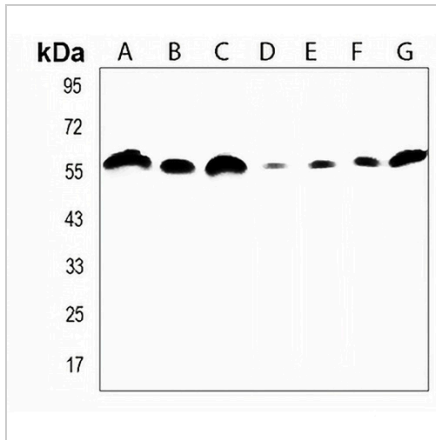
Description	Rabbit polyclonal antibody to Artemis
Specificity	Recognizes endogenous levels of Artemis protein.
Antibody Type	Primary antibody
Immunogen	KLH-conjugated synthetic peptide encompassing a sequence within the N-terminal region of human Artemis. The exact sequence is proprietary.
Purification	The antibody was purified by immunogen affinity chromatography.
Molecular Weight	Predicted: 78 kD; Observed: 60 kD
Form/Buffer	Liquid in 0.42% Potassium phosphate, 0.87% Sodium chloride, pH 7.3, 30% glycerol, and 0.01% sodium azide.
Alternative Names	ARTEMIS; ASCID; SCIDA; SNM1C; Protein artemis; DNA cross-link repair 1C protein; Protein A-SCID; SNM1 homolog C; hSNM1C; SNM1-like protein
Gene Symbol	DCLRE1C
Entrez Gene	64421(Human); 227525(Mouse)
SwissProt	Q96SD1(Human); Q8K4J0(Mouse)

*AREX continuously optimizes our products. Webpage content may not reflect the latest updates. For inquiries, please contact info@arexbio.com or your local distributor.

*Clone Number, Reactivity, Source/Host and Clonality can be found in the product name and Key Features section above.

DATASHEET**Artemis Rabbit Polyclonal Antibody**

CAT. NO. APA19101

DATA

Western blot analysis of Artemis expression in HepG2 (A), HT29 (B), Jurkat (C), mouse heart (D), MCF7 (E), PC3 (F), ZR751 (G) whole cell lysates. (Predicted band size: 78 kD; Observed band size: 60 kD)

STORAGE

Store at 4°C short term. For long term storage, store at -20°C, avoiding freeze/thaw cycles.

NOTE

For Research Use Only. Not for diagnostic, therapeutics, prophylactic or in vivo use.