

**DATASHEET**

**PPP2R3C Rabbit Polyclonal Antibody**

CAT. NO. APA19102

**KEY FEATURES**

Target	PPP2R3C	Source / Host	Rabbit
Reactivity	Human	Clonality	Polyclonal
Applications	WB, IHC	Conjugation	Unconjugated
Form / Buffer	Liquid in 0.42% Potassium phosphate, 0.87% Sodium chloride, pH 7.3, 30% glycerol, and 0.01% sodium azide.		Storage at-20°C

**BACKGROUND**

May regulate MCM3AP phosphorylation through phosphatase recruitment . May act as a negative regulator of ABCB1 expression and function through the dephosphorylation of ABCB1 by TFPI2/PPP2R3C complex . May play a role in the activation-induced cell death of B-cells .

**APPLICATION**

To ensure optimal assay performance, AREX recommends conducting reagent titration tailored to each testing system for optimal detection results.

WB	1:500 - 1:1000
IHC	1:50 - 1:200

\*Results are sample-specific. Please refer to your local assay conditions and test parameters for reference.

**PRODUCT OVERVIEW**

Description	Rabbit polyclonal antibody to PPP2R3C
Specificity	Recognizes endogenous levels of PPP2R3C protein.
Antibody Type	Primary antibody
Immunogen	KLH-conjugated synthetic peptide encompassing a sequence within the N-terminal region of human PPP2R3C. The exact sequence is proprietary.
Purification	The antibody was purified by immunogen affinity chromatography.
Molecular Weight	Predicted: 53 kD; Observed: 54 kD
Form/Buffer	Liquid in 0.42% Potassium phosphate, 0.87% Sodium chloride, pH 7.3, 30% glycerol, and 0.01% sodium azide.
Alternative Names	C14orf10; G5PR; Serine/threonine-protein phosphatase 2A regulatory subunit B" subunit gamma; Protein phosphatase subunit G5PR; Rhabdomyosarcoma antigen MU-RMS-40.6A/6C
Gene Symbol	PPP2R3C
Entrez Gene	55012(Human)
SwissProt	Q969Q6(Human)

\*AREX continuously optimizes our products. Webpage content may not reflect the latest updates. For inquiries, please contact [info@arexbio.com](mailto:info@arexbio.com) or your local distributor.

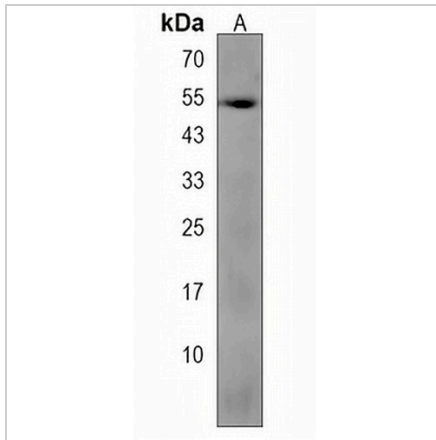
\*Clone Number, Reactivity, Source/Host and Clonality can be found in the product name and Key Features section above.

**DATASHEET**

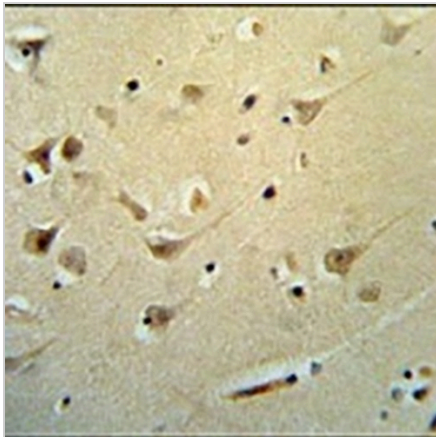
**PPP2R3C Rabbit Polyclonal Antibody**

CAT. NO. APA19102

**DATA**



Western blot analysis of PPP2R3C expression in Y79 (A) whole cell lysates. (Predicted band size: 53 kD; Observed band size: 54 kD)



Immunohistochemical analysis of PPP2R3C staining in human brain formalin fixed paraffin embedded tissue section. The section was pre-treated using heat mediated antigen retrieval with sodium citrate buffer (pH 6.0). The section was then incubated with the antibody at room temperature and detected using an HRP conjugated compact polymer system. DAB was used as the chromogen. The section was then counterstained with haematoxylin and mounted with DPX.

**STORAGE**

Store at 4°C short term. For long term storage, store at -20°C, avoiding freeze/thaw cycles.

**NOTE**

For Research Use Only. Not for diagnostic, therapeutics, prophylactic or in vivo use.