

DATASHEET

PRUNE Rabbit Polyclonal Antibody

CAT. NO. APA19104

KEY FEATURES

| | | | |
|---------------|---|---------------|--------------------|
| Target | PRUNE | Source / Host | Rabbit |
| Reactivity | Human | Clonality | Polyclonal |
| Applications | WB, IHC, FC | Conjugation | Unconjugated |
| Form / Buffer | Liquid in 0.42% Potassium phosphate, 0.87% Sodium chloride, pH 7.3, 30% glycerol, and 0.01% sodium azide. | | Storage at-20°C |

BACKGROUND

Phosphodiesterase (PDE) that has higher activity toward cAMP than cGMP, as substrate. Plays a role in cell proliferation, migration and differentiation, and acts as a negative regulator of NME1. Plays a role in the regulation of neurogenesis that has higher activity toward cAMP than cGMP, as substrate. Plays a role in cell proliferation, migration and differentiation, and acts as a negative regulator of NME1. Plays a role in the regulation of neurogenesis . Involved in the regulation of microtubule polymerization .

APPLICATION

To ensure optimal assay performance, AREX recommends conducting reagent titration tailored to each testing system for optimal detection results.

| | |
|-----|----------------|
| WB | 1:500 - 1:1000 |
| IHC | 1:50 - 1:200 |
| FC | 1:10 - 1:50 |

*Results are sample-specific. Please refer to your local assay conditions and test parameters for reference.

PRODUCT OVERVIEW

| | |
|-------------------|--|
| Description | Rabbit polyclonal antibody to PRUNE |
| Specificity | Recognizes endogenous levels of PRUNE protein. |
| Antibody Type | Primary antibody |
| Immunogen | KLH-conjugated synthetic peptide encompassing a sequence within the C-terminal region of human PRUNE. The exact sequence is proprietary. |
| Purification | The antibody was purified by immunogen affinity chromatography. |
| Molecular Weight | Predicted: 50 kD; Observed: 54 kD |
| Form/Buffer | Liquid in 0.42% Potassium phosphate, 0.87% Sodium chloride, pH 7.3, 30% glycerol, and 0.01% sodium azide. |
| Alternative Names | Protein prune homolog; hPrune; Drosophila-related expressed sequence 17; DRES-17; DRES17; HTcD37 |
| Gene Symbol | PRUNE |
| Entrez Gene | 58497(Human) |
| SwissProt | Q86TP1(Human) |

*AREX continuously optimizes our products. Webpage content may not reflect the latest updates. For inquiries, please contact info@arexbio.com or your local distributor.

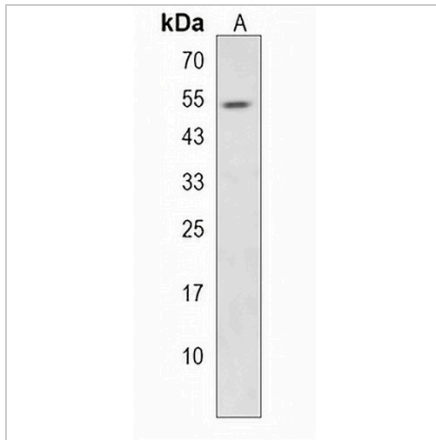
*Clone Number, Reactivity, Source/Host and Clonality can be found in the product name and Key Features section above.

DATASHEET

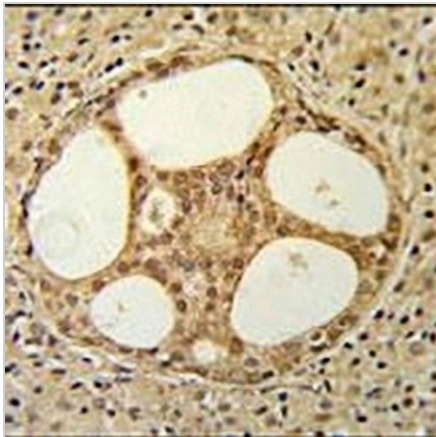
PRUNE Rabbit Polyclonal Antibody

CAT. NO. APA19104

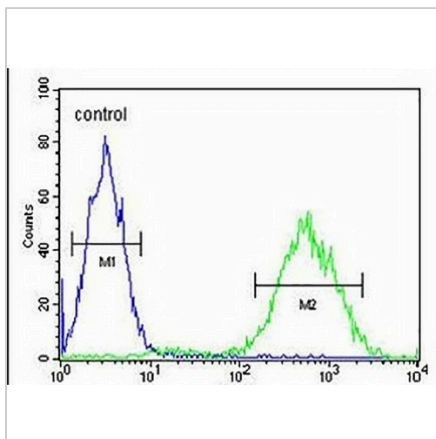
DATA



Western blot analysis of PRUNE expression in Jurkat (A) whole cell lysates. (Predicted band size: 50 kD; Observed band size: 54 kD)



Immunohistochemical analysis of PRUNE staining in human prostate carcinoma formalin fixed paraffin embedded tissue section. The section was pre-treated using heat mediated antigen retrieval with sodium citrate buffer (pH 6.0). The section was then incubated with the antibody at room temperature and detected using an HRP conjugated compact polymer system. DAB was used as the chromogen. The section was then counterstained with haematoxylin and mounted with DPX.



Flow cytometric analysis of Jurkat cells using Anti-PRUNE Antibody. The cells were fixed with 2% paraformaldehyde (10 min) and then permeabilized with 90% methanol for 10 min. The cells were incubated in 2% bovine serum albumin to block non-specific protein-protein interactions followed by the antibody at 37 °C for 60 min. The secondary antibody Goat Anti-Rabbit IgG (H&L) - AREX® Fluor 488 was incubated at 37 °C for 40 min. Isotype control antibody (blue line) was used under the same condition.

STORAGE

Store at 4°C short term. For long term storage, store at -20°C, avoiding freeze/thaw cycles.

NOTE

For Research Use Only. Not for diagnostic, therapeutics, prophylactic or in vivo use.