

DATASHEET

LMBR1L Rabbit Polyclonal Antibody

CAT. NO. APA19109

KEY FEATURES

Target	LMBR1L	Source / Host	Rabbit
Reactivity	Human	Clonality	Polyclonal
Applications	WB, IHC, FC	Conjugation	Unconjugated
Form / Buffer	Liquid in 0.42% Potassium phosphate, 0.87% Sodium chloride, pH 7.3, 30% glycerol, and 0.01% sodium azide.		Storage at -20°C

BACKGROUND

Plays an essential role in lymphocyte development by negatively regulating the canonical Wnt signaling pathway . In association with UBAC2 and E3 ubiquitin-protein ligase AMFR, promotes the ubiquitin-mediated degradation of CTNNB1 and Wnt receptors FZD6 and LRP6 . LMBR1L stabilizes the beta-catenin destruction complex that is required for regulating CTNNB1 levels . Acts as a LCN1 receptor and can mediate its endocytosis .

APPLICATION

To ensure optimal assay performance, AREX recommends conducting reagent titration tailored to each testing system for optimal detection results.

WB	1:500 - 1:1000
IHC	1:50 - 1:200
FC	1:10 - 1:50

*Results are sample-specific. Please refer to your local assay conditions and test parameters for reference.

PRODUCT OVERVIEW

Description	Rabbit polyclonal antibody to LMBR1L
Specificity	Recognizes endogenous levels of LMBR1L protein.
Antibody Type	Primary antibody
Immunogen	KLH-conjugated synthetic peptide encompassing a sequence within the C-terminal region of human LMBR1L. The exact sequence is proprietary.
Purification	The antibody was purified by immunogen affinity chromatography.
Molecular Weight	Predicted: 55 kD; Observed: 57 kD
Form/Buffer	Liquid in 0.42% Potassium phosphate, 0.87% Sodium chloride, pH 7.3, 30% glycerol, and 0.01% sodium azide.
Alternative Names	KIAA1174; LIMR; Protein LMBR1L; Limb region 1 protein homolog-like; Lipocalin-1-interacting membrane receptor; Lipocalin-interacting membrane receptor
Gene Symbol	LMBR1L
Entrez Gene	55716(Human)
SwissProt	Q6UX01(Human)

*AREX continuously optimizes our products. Webpage content may not reflect the latest updates. For inquiries, please contact info@arexbio.com or your local distributor.

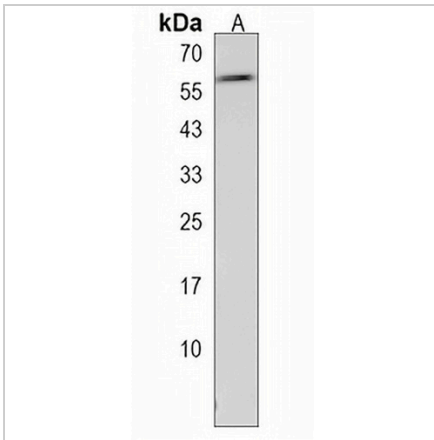
*Clone Number, Reactivity, Source/Host and Clonality can be found in the product name and Key Features section above.

DATASHEET

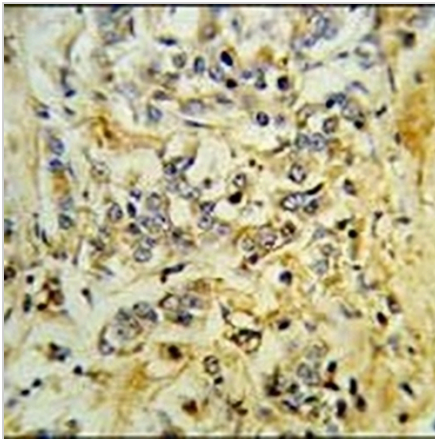
LMBR1L Rabbit Polyclonal Antibody

CAT. NO. APA19109

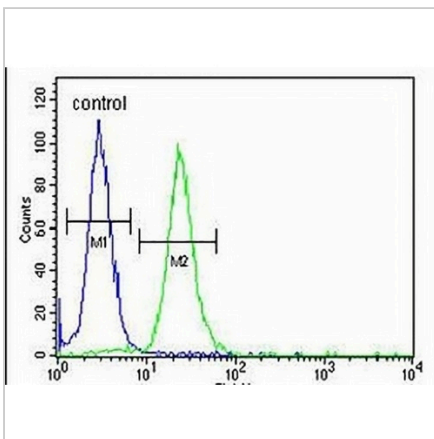
DATA



Western blot analysis of LMBR1L expression in 293 (A) whole cell lysates. (Predicted band size: 55 kD; Observed band size: 57 kD)



Immunohistochemical analysis of LMBR1L staining in human breast carcinoma formalin fixed paraffin embedded tissue section. The section was pre-treated using heat mediated antigen retrieval with sodium citrate buffer (pH 6.0). The section was then incubated with the antibody at room temperature and detected using an HRP conjugated compact polymer system. DAB was used as the chromogen. The section was then counterstained with haematoxylin and mounted with DPX.



Flow cytometric analysis of 293 cells using Anti-LMBR1L Antibody. The cells were fixed with 2% paraformaldehyde (10 min) and then permeabilized with 90% methanol for 10 min. The cells were incubated in 2% bovine serum albumin to block non-specific protein-protein interactions followed by the antibody at 37 °C for 60 min. The secondary antibody Goat Anti-Rabbit IgG (H&L) - AREX® Fluor 488 was incubated at 37 °C for 40 min. Isotype control antibody (blue line) was used under the same condition.

STORAGE

Store at 4°C short term. For long term storage, store at -20°C, avoiding freeze/thaw cycles.

NOTE

For Research Use Only. Not for diagnostic, therapeutics, prophylactic or in vivo use.