

DATASHEET

MMAA Rabbit Polyclonal Antibody

CAT. NO. APA19110

KEY FEATURES

Target	MMAA	Source / Host	Rabbit
Reactivity	Human, Mouse	Clonality	Polyclonal
Applications	WB, IHC	Conjugation	Unconjugated
Form / Buffer	Liquid in 0.42% Potassium phosphate, 0.87% Sodium chloride, pH 7.3, 30% glycerol, and 0.01% sodium azide.		Storage at -20°C

BACKGROUND

GTPase, binds and hydrolyzes GTP . Involved in intracellular vitamin B12 metabolism, mediates the transport of cobalamin (Cbl) into mitochondria for the final steps of adenosylcobalamin (AdoCbl) synthesis . Functions as a G-protein chaperone that assists AdoCbl cofactor delivery from MMAB to the methylmalonyl-CoA mutase (MMUT) . Plays a dual role as both a protectase and a reactivase for MMUT . Protects MMUT from progressive inactivation by oxidation by decreasing the rate of the formation of the oxidized inactive cofactor hydroxocobalamin (OH2Cbl) . Additionally acts a reactivase by promoting the replacement of OH2Cbl by the active cofactor AdoCbl, restoring the activity of MMUT in the presence and hydrolysis of GTP .

APPLICATION

To ensure optimal assay performance, AREX recommends conducting reagent titration tailored to each testing system for optimal detection results.

WB	1:500 - 1:1000
IHC	1:50 - 1:200

*Results are sample-specific. Please refer to your local assay conditions and test parameters for reference.

PRODUCT OVERVIEW

Description	Rabbit polyclonal antibody to MMAA
Specificity	Recognizes endogenous levels of MMAA protein.
Antibody Type	Primary antibody
Immunogen	KLH-conjugated synthetic peptide encompassing a sequence within the N-terminal region of human MMAA. The exact sequence is proprietary.
Purification	The antibody was purified by immunogen affinity chromatography.
Molecular Weight	Predicted: 46 kD; Observed: 47 kD
Form/Buffer	Liquid in 0.42% Potassium phosphate, 0.87% Sodium chloride, pH 7.3, 30% glycerol, and 0.01% sodium azide.
Alternative Names	Methylmalonic aciduria type A protein, mitochondrial
Gene Symbol	MMAA
Entrez Gene	166785(Human); 109136(Mouse)
SwissProt	Q8IVH4(Human); Q8C7H1(Mouse)

*AREX continuously optimizes our products. Webpage content may not reflect the latest updates. For inquiries, please contact info@arexbio.com or your local distributor.

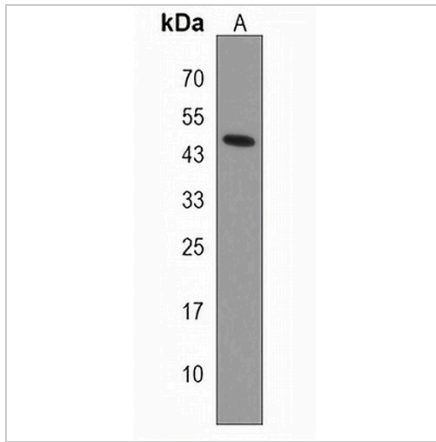
*Clone Number, Reactivity, Source/Host and Clonality can be found in the product name and Key Features section above.

DATASHEET

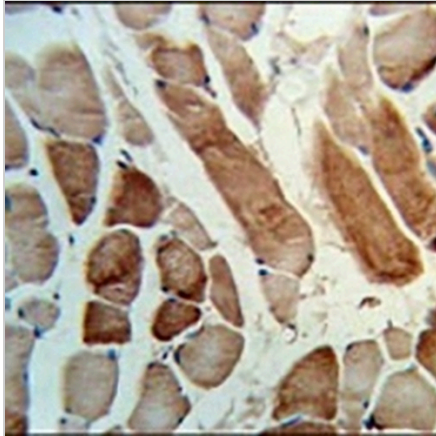
MMAA Rabbit Polyclonal Antibody

CAT. NO. APA19110

DATA



Western blot analysis of MMAA expression in human liver (A) whole cell lysates. (Predicted band size: 46 kD; Observed band size: 47 kD)



Immunohistochemical analysis of MMAA staining in human skeletal muscle formalin fixed paraffin embedded tissue section. The section was pre-treated using heat mediated antigen retrieval with sodium citrate buffer (pH 6.0). The section was then incubated with the antibody at room temperature and detected using an HRP conjugated compact polymer system. DAB was used as the chromogen. The section was then counterstained with haematoxylin and mounted with DPX.

STORAGE

Store at 4°C short term. For long term storage, store at -20°C, avoiding freeze/thaw cycles.

NOTE

For Research Use Only. Not for diagnostic, therapeutics, prophylactic or in vivo use.