

DATASHEET

DNAJC6 Rabbit Polyclonal Antibody

CAT. NO. APA19136

KEY FEATURES

| | | | |
|---------------|---|---------------|---------------------|
| Target | DNAJC6 | Source / Host | Rabbit |
| Reactivity | Human, Mouse | Clonality | Polyclonal |
| Applications | WB | Conjugation | Unconjugated |
| Form / Buffer | Liquid in 0.42% Potassium phosphate, 0.87% Sodium chloride, pH 7.3, 30% glycerol, and 0.01% sodium azide. | | Storage at -20°C |

BACKGROUND

May act as a protein phosphatase and/or a lipid phosphatase. Co-chaperone that recruits HSPA8/HSC70 to clathrin-coated vesicles (CCVs) and promotes the ATP-dependent dissociation of clathrin from CCVs and participates in clathrin-mediated endocytosis of synaptic vesicles and their recycling and also in intracellular trafficking and promotes the ATP-dependent dissociation of clathrin from CCVs and participates in clathrin-mediated endocytosis of synaptic vesicles and their recycling and also in intracellular trafficking . Firstly, binds tightly to the clathrin cages, at a ratio of one DNAJC6 per clathrin triskelion.

APPLICATION

To ensure optimal assay performance, AREX recommends conducting reagent titration tailored to each testing system for optimal detection results.

| | |
|----|----------------|
| WB | 1:500 - 1:1000 |
|----|----------------|

*Results are sample-specific. Please refer to your local assay conditions and test parameters for reference.

PRODUCT OVERVIEW

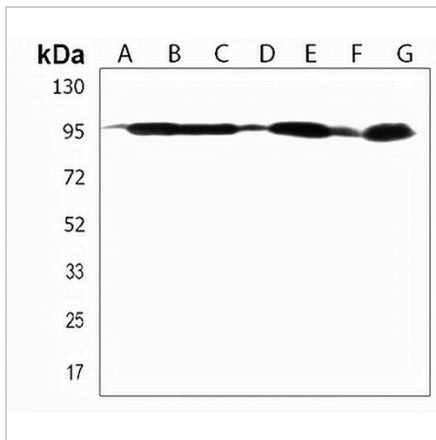
| | |
|-------------------|--|
| Description | Rabbit polyclonal antibody to DNAJC6 |
| Specificity | Recognizes endogenous levels of DNAJC6 protein. |
| Antibody Type | Primary antibody |
| Immunogen | KLH-conjugated synthetic peptide encompassing a sequence within the Central region of human DNAJC6. The exact sequence is proprietary. |
| Purification | The antibody was purified by immunogen affinity chromatography. |
| Molecular Weight | Predicted: 99 kD; Observed: 99 kD |
| Form/Buffer | Liquid in 0.42% Potassium phosphate, 0.87% Sodium chloride, pH 7.3, 30% glycerol, and 0.01% sodium azide. |
| Alternative Names | KIAA0473; Putative tyrosine-protein phosphatase auxilin; Dnaj homolog subfamily C member 6 |
| Gene Symbol | DNAJC6 |
| Entrez Gene | 9829(Human); 72685(Mouse) |
| SwissProt | O75061(Human); Q80TZ3(Mouse) |

*AREX continuously optimizes our products. Webpage content may not reflect the latest updates. For inquiries, please contact info@arexbio.com or your local distributor.

*Clone Number, Reactivity, Source/Host and Clonality can be found in the product name and Key Features section above.

DATASHEET**DNAJC6 Rabbit Polyclonal Antibody**

CAT. NO. APA19136

DATA

Western blot analysis of DNAJC6 expression in K562 (A), SHSY5Y (B), U87MG (C), HL60 (D), mouse cerebellum (E), mouse brain (F), rat cerebellum (G) whole cell lysates. (Predicted band size: 99 kD; Observed band size: 99 kD)

STORAGE

Store at 4°C short term. For long term storage, store at -20°C, avoiding freeze/thaw cycles.

NOTE

For Research Use Only. Not for diagnostic, therapeutics, prophylactic or in vivo use.