

DATASHEET

Semaphorin 4G Rabbit Polyclonal Antibody

CAT. NO. APA19147

KEY FEATURES

Target	Semaphorin 4G	Source / Host	Rabbit
Reactivity	Human	Clonality	Polyclonal
Applications	WB	Conjugation	Unconjugated
Form / Buffer	Liquid in 0.42% Potassium phosphate, 0.87% Sodium chloride, pH 7.3, 30% glycerol, and 0.01% sodium azide.		Storage at -20°C

BACKGROUND

Cell surface receptor for PLXNB2. May play a role in axon guidance .

APPLICATION

To ensure optimal assay performance, AREX recommends conducting reagent titration tailored to each testing system for optimal detection results.

WB	1:500 - 1:1000
----	----------------

*Results are sample-specific. Please refer to your local assay conditions and test parameters for reference.

PRODUCT OVERVIEW

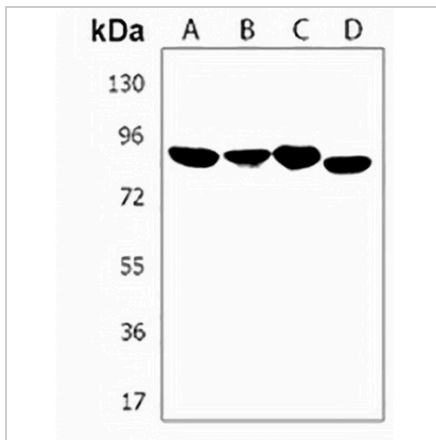
Description	Rabbit polyclonal antibody to Semaphorin 4G
Specificity	Recognizes endogenous levels of Semaphorin 4G protein.
Antibody Type	Primary antibody
Immunogen	KLH-conjugated synthetic peptide encompassing a sequence within the Central region of human Semaphorin 4G. The exact sequence is proprietary.
Purification	The antibody was purified by immunogen affinity chromatography.
Molecular Weight	Predicted: 91 kD; Observed: 91 kD
Form/Buffer	Liquid in 0.42% Potassium phosphate, 0.87% Sodium chloride, pH 7.3, 30% glycerol, and 0.01% sodium azide.
Alternative Names	KIAA1619; Semaphorin-4G
Gene Symbol	SEMA4G
Entrez Gene	57715(Human)
SwissProt	Q9NTN9(Human)

*AREX continuously optimizes our products. Webpage content may not reflect the latest updates. For inquiries, please contact info@arexbio.com or your local distributor.

*Clone Number, Reactivity, Source/Host and Clonality can be found in the product name and Key Features section above.

DATASHEET**Semaphorin 4G Rabbit Polyclonal Antibody**

CAT. NO. APA19147

DATA

Western blot analysis of Semaphorin 4G expression in A549 (A), HeLa (B), HT29 (C), SHSY5Y (D) whole cell lysates. (Predicted band size: 91 kD; Observed band size: 91 kD)

STORAGE

Store at 4°C short term. For long term storage, store at -20°C, avoiding freeze/thaw cycles.

NOTE

For Research Use Only. Not for diagnostic, therapeutics, prophylactic or in vivo use.