

DATASHEET

C17orf80 Rabbit Polyclonal Antibody

CAT. NO. APA19151

KEY FEATURES

Target	C17orf80	Source / Host	Rabbit
Reactivity	Human	Clonality	Polyclonal
Applications	WB	Conjugation	Unconjugated
Form / Buffer	Liquid in 0.42% Potassium phosphate, 0.87% Sodium chloride, pH 7.3, 30% glycerol, and 0.01% sodium azide.		Storage at-20°C

BACKGROUND

Critical regulator of mitochondrial DNA (mtDNA) abundance . Binds dsDNA throughout the mitochondrial genome without sequence specificity and controls mtDNA copy number by promoting its replication . Also plays important roles in mitochondrial metabolism and cell proliferation .

APPLICATION

To ensure optimal assay performance, AREX recommends conducting reagent titration tailored to each testing system for optimal detection results.

WB	1:500 - 1:1000
----	----------------

*Results are sample-specific. Please refer to your local assay conditions and test parameters for reference.

PRODUCT OVERVIEW

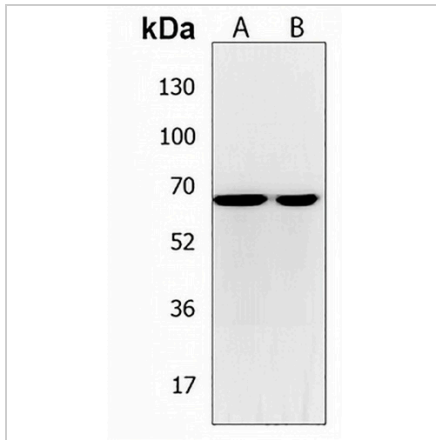
Description	Rabbit polyclonal antibody to C17orf80
Specificity	Recognizes endogenous levels of C17orf80 protein.
Antibody Type	Primary antibody
Immunogen	KLH-conjugated synthetic peptide encompassing a sequence within the Central region of human C17orf80. The exact sequence is proprietary.
Purification	The antibody was purified by immunogen affinity chromatography.
Molecular Weight	Predicted: 67 kD; Observed: 65 kD
Form/Buffer	Liquid in 0.42% Potassium phosphate, 0.87% Sodium chloride, pH 7.3, 30% glycerol, and 0.01% sodium azide.
Alternative Names	Uncharacterized protein C17orf80; Cell migration-inducing gene 3 protein; Human lung cancer oncogene 8 protein; HLC-8
Gene Symbol	C17orf80
Entrez Gene	55028(Human)
SwissProt	Q9BSJ5(Human)

*AREX continuously optimizes our products. Webpage content may not reflect the latest updates. For inquiries, please contact info@arexbio.com or your local distributor.

*Clone Number, Reactivity, Source/Host and Clonality can be found in the product name and Key Features section above.

DATASHEET**C17orf80 Rabbit Polyclonal Antibody**

CAT. NO. APA19151

DATA

Western blot analysis of C17orf80 expression in K562 (A), human ovary (B) whole cell lysates. (Predicted band size: 67 kD; Observed band size: 65 kD)

STORAGE

Store at 4°C short term. For long term storage, store at -20°C, avoiding freeze/thaw cycles.

NOTE

For Research Use Only. Not for diagnostic, therapeutics, prophylactic or in vivo use.