

DATASHEET

IQSEC2 Rabbit Polyclonal Antibody

CAT. NO. APA19156

KEY FEATURES

Target	IQSEC2	Source / Host	Rabbit
Reactivity	Human	Clonality	Polyclonal
Applications	WB	Conjugation	Unconjugated
Form / Buffer	Liquid in 0.42% Potassium phosphate, 0.87% Sodium chloride, pH 7.3, 30% glycerol, and 0.01% sodium azide.		Storage at -20°C

BACKGROUND

Is a guanine nucleotide exchange factor for the ARF GTP-binding proteins.

APPLICATION

To ensure optimal assay performance, AREX recommends conducting reagent titration tailored to each testing system for optimal detection results.

WB	1:500 - 1:1000
----	----------------

*Results are sample-specific. Please refer to your local assay conditions and test parameters for reference.

PRODUCT OVERVIEW

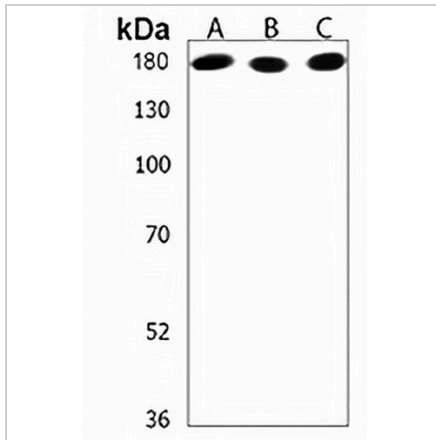
Description	Rabbit polyclonal antibody to IQSEC2
Specificity	Recognizes endogenous levels of IQSEC2 protein.
Antibody Type	Primary antibody
Immunogen	KLH-conjugated synthetic peptide encompassing a sequence within the Central region of human IQSEC2. The exact sequence is proprietary.
Purification	The antibody was purified by immunogen affinity chromatography.
Molecular Weight	Predicted: 162 kD; Observed: 162 kD
Form/Buffer	Liquid in 0.42% Potassium phosphate, 0.87% Sodium chloride, pH 7.3, 30% glycerol, and 0.01% sodium azide.
Alternative Names	KIAA0522; IQ motif and SEC7 domain-containing protein 2
Gene Symbol	IQSEC2
Entrez Gene	23096(Human)
SwissProt	Q5JU85(Human)

*AREX continuously optimizes our products. Webpage content may not reflect the latest updates. For inquiries, please contact info@arexbio.com or your local distributor.

*Clone Number, Reactivity, Source/Host and Clonality can be found in the product name and Key Features section above.

DATASHEET**IQSEC2 Rabbit Polyclonal Antibody**

CAT. NO. APA19156

DATA

Western blot analysis of IQSEC2 expression in K562 (A), Jurkat (B), HepG2 (C) whole cell lysates. (Predicted band size: 162 kD; Observed band size: 162 kD)

STORAGE

Store at 4°C short term. For long term storage, store at -20°C, avoiding freeze/thaw cycles.

NOTE

For Research Use Only. Not for diagnostic, therapeutics, prophylactic or in vivo use.