

DATASHEET

ACSF2 Rabbit Polyclonal Antibody

CAT. NO. APA19160

KEY FEATURES

Target	ACSF2	Source / Host	Rabbit
Reactivity	Human, Mouse, Rat	Clonality	Polyclonal
Applications	WB	Conjugation	Unconjugated
Form / Buffer	Liquid in 0.42% Potassium phosphate, 0.87% Sodium chloride, pH 7.3, 30% glycerol, and 0.01% sodium azide.		Storage at-20°C

BACKGROUND

Acyl-CoA synthases catalyze the initial reaction in fatty acid metabolism, by forming a thioester with CoA . Has some preference toward medium-chain substrates . Plays a role in adipocyte differentiation .

APPLICATION

To ensure optimal assay performance, AREX recommends conducting reagent titration tailored to each testing system for optimal detection results.

WB	1:500 - 1:1000
----	----------------

*Results are sample-specific. Please refer to your local assay conditions and test parameters for reference.

PRODUCT OVERVIEW

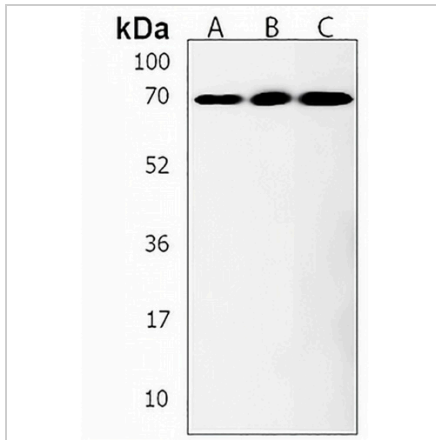
Description	Rabbit polyclonal antibody to ACSF2
Specificity	Recognizes endogenous levels of ACSF2 protein.
Antibody Type	Primary antibody
Immunogen	KLH-conjugated synthetic peptide encompassing a sequence within the Central region of human ACSF2. The exact sequence is proprietary.
Purification	The antibody was purified by immunogen affinity chromatography.
Molecular Weight	Predicted: 68 kD; Observed: 68 kD
Form/Buffer	Liquid in 0.42% Potassium phosphate, 0.87% Sodium chloride, pH 7.3, 30% glycerol, and 0.01% sodium azide.
Alternative Names	Acyl-CoA synthetase family member 2, mitochondrial
Gene Symbol	ACSF2
Entrez Gene	80221(Human); 264895(Mouse); 619561(Rat)
SwissProt	Q96CM8(Human); Q8VCW8(Mouse); Q499N5(Rat)

*AREX continuously optimizes our products. Webpage content may not reflect the latest updates. For inquiries, please contact info@arexbio.com or your local distributor.

*Clone Number, Reactivity, Source/Host and Clonality can be found in the product name and Key Features section above.

DATASHEET**ACSF2 Rabbit Polyclonal Antibody**

CAT. NO. APA19160

DATA

Western blot analysis of ACSF2 expression in human kidney (A), mouse lung (B), rat liver (C) whole cell lysates. (Predicted band size: 68 kD; Observed band size: 68 kD)

STORAGE

Store at 4°C short term. For long term storage, store at -20°C, avoiding freeze/thaw cycles.

NOTE

For Research Use Only. Not for diagnostic, therapeutics, prophylactic or in vivo use.