

DATASHEET

MTCP1 Rabbit Polyclonal Antibody

CAT. NO. APA19162

KEY FEATURES

Target	MTCP1	Source / Host	Rabbit
Reactivity	Human, Mouse	Clonality	Polyclonal
Applications	WB	Conjugation	Unconjugated
Form / Buffer	Liquid in 0.42% Potassium phosphate, 0.87% Sodium chloride, pH 7.3, 30% glycerol, and 0.01% sodium azide.		Storage at -20°C

BACKGROUND

Enhances the phosphorylation and activation of AKT1 and AKT2.

APPLICATION

To ensure optimal assay performance, AREX recommends conducting reagent titration tailored to each testing system for optimal detection results.

WB	1:500 - 1:1000
----	----------------

*Results are sample-specific. Please refer to your local assay conditions and test parameters for reference.

PRODUCT OVERVIEW

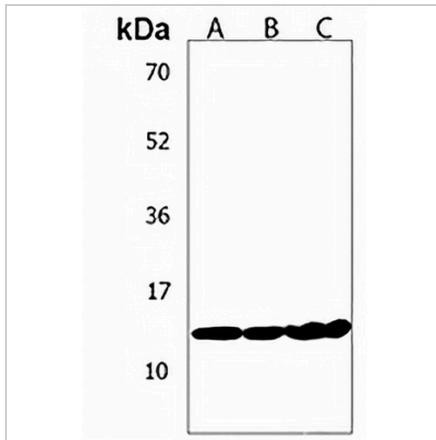
Description	Rabbit polyclonal antibody to MTCP1
Specificity	Recognizes endogenous levels of MTCP1 protein.
Antibody Type	Primary antibody
Immunogen	KLH-conjugated synthetic peptide encompassing a sequence within the C-terminal region of human MTCP1. The exact sequence is proprietary.
Purification	The antibody was purified by immunogen affinity chromatography.
Molecular Weight	Predicted: 12 kD; Observed: 13 kD
Form/Buffer	Liquid in 0.42% Potassium phosphate, 0.87% Sodium chloride, pH 7.3, 30% glycerol, and 0.01% sodium azide.
Alternative Names	C6.1B; Protein p13 MTCP-1; p13MTCP1; Mature T-cell proliferation-1 type B1; MTCP-1 type B1
Gene Symbol	MTCP1
Entrez Gene	4515(Human); 17763(Mouse)
SwissProt	P56278(Human); Q60945(Mouse)

*AREX continuously optimizes our products. Webpage content may not reflect the latest updates. For inquiries, please contact info@arexbio.com or your local distributor.

*Clone Number, Reactivity, Source/Host and Clonality can be found in the product name and Key Features section above.

DATASHEET**MTCP1 Rabbit Polyclonal Antibody**

CAT. NO. APA19162

DATA

Western blot analysis of MTCP1 expression in mouse kidney (A), human liver (B), human kidney (C) whole cell lysates. (Predicted band size: 12 kD; Observed band size: 13 kD)

STORAGE

Store at 4°C short term. For long term storage, store at -20°C, avoiding freeze/thaw cycles.

NOTE

For Research Use Only. Not for diagnostic, therapeutics, prophylactic or in vivo use.