

DATASHEET

SLC5A4 Rabbit Polyclonal Antibody

CAT. NO. APA19163

KEY FEATURES

Target	SLC5A4	Source / Host	Rabbit
Reactivity	Human	Clonality	Polyclonal
Applications	WB	Conjugation	Unconjugated
Form / Buffer	Liquid in 0.42% Potassium phosphate, 0.87% Sodium chloride, pH 7.3, 30% glycerol, and 0.01% sodium azide.		Storage at -20°C

BACKGROUND

Does not function as sodium/D-glucose symporter . However, may function as a D-glucose sensor by generating a D-glucose-induced depolarization which is pH-independent, Na(+)-dependent at neutral pH and probably H(+)-dependent at acidic pH .

APPLICATION

To ensure optimal assay performance, AREX recommends conducting reagent titration tailored to each testing system for optimal detection results.

WB	1:500 - 1:1000
----	----------------

*Results are sample-specific. Please refer to your local assay conditions and test parameters for reference.

PRODUCT OVERVIEW

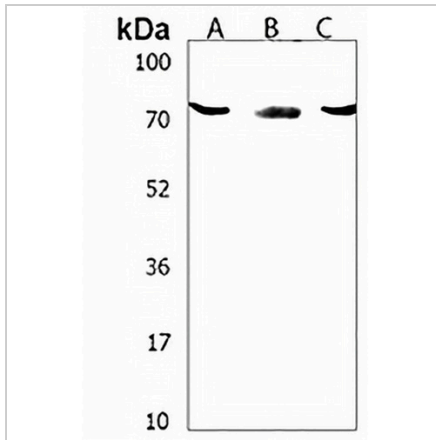
Description	Rabbit polyclonal antibody to SLC5A4
Specificity	Recognizes endogenous levels of SLC5A4 protein.
Antibody Type	Primary antibody
Immunogen	KLH-conjugated synthetic peptide encompassing a sequence within the C-terminal region of human SLC5A4. The exact sequence is proprietary.
Purification	The antibody was purified by immunogen affinity chromatography.
Molecular Weight	Predicted: 72 kD; Observed: 72 kD
Form/Buffer	Liquid in 0.42% Potassium phosphate, 0.87% Sodium chloride, pH 7.3, 30% glycerol, and 0.01% sodium azide.
Alternative Names	SAAT1; SGLT3; Low affinity sodium-glucose cotransporter; Sodium/glucose cotransporter 3; Na(+)/glucose cotransporter 3; Solute carrier family 5 member 4
Gene Symbol	SLC5A4
Entrez Gene	6527(Human)
SwissProt	Q9NY91(Human)

*AREX continuously optimizes our products. Webpage content may not reflect the latest updates. For inquiries, please contact info@arexbio.com or your local distributor.

*Clone Number, Reactivity, Source/Host and Clonality can be found in the product name and Key Features section above.

DATASHEET**SLC5A4 Rabbit Polyclonal Antibody**

CAT. NO. APA19163

DATA

Western blot analysis of SLC5A4 expression in human liver (A), human spleen (B), human cerebellum (C) whole cell lysates. (Predicted band size: 72 kD; Observed band size: 72 kD)

STORAGE

Store at 4°C short term. For long term storage, store at -20°C, avoiding freeze/thaw cycles.

NOTE

For Research Use Only. Not for diagnostic, therapeutics, prophylactic or in vivo use.