

DATASHEET

RNF7 Rabbit Polyclonal Antibody

CAT. NO. APA19166

KEY FEATURES

| | | | |
|---------------|---|---------------|---------------------|
| Target | RNF7 | Source / Host | Rabbit |
| Reactivity | Human, Mouse | Clonality | Polyclonal |
| Applications | WB, IHC | Conjugation | Unconjugated |
| Form / Buffer | Liquid in 0.42% Potassium phosphate, 0.87% Sodium chloride, pH 7.3, 30% glycerol, and 0.01% sodium azide. | | Storage at -20°C |

BACKGROUND

Catalytic component of multiple cullin-5-RING E3 ubiquitin-protein ligase complexes (ECS complexes), which mediate the ubiquitination and subsequent proteasomal degradation of target proteins, which mediate the ubiquitination and subsequent proteasomal degradation of target proteins. It is thereby involved in various biological processes, such as cell cycle progression, signal transduction and transcription. The functional specificity of the E3 ubiquitin-protein ligase ECS complexes depend on the variable SOCS box-containing substrate recognition component. Within ECS complexes, RNF7/RBX2 recruits the E2 ubiquitination enzyme to the complex via its RING-type and brings it into close proximity to the substrate.

APPLICATION

To ensure optimal assay performance, AREX recommends conducting reagent titration tailored to each testing system for optimal detection results.

| | |
|-----|-----------------|
| WB | 1:1000 - 1:2000 |
| IHC | 1:50 - 1:200 |

*Results are sample-specific. Please refer to your local assay conditions and test parameters for reference.

PRODUCT OVERVIEW

| | |
|-------------------|--|
| Description | Rabbit polyclonal antibody to RNF7 |
| Specificity | Recognizes endogenous levels of RNF7 protein. |
| Antibody Type | Primary antibody |
| Immunogen | KLH-conjugated synthetic peptide encompassing a sequence within the N-terminal region of human RNF7. The exact sequence is proprietary. |
| Purification | The antibody was purified by immunogen affinity chromatography. |
| Molecular Weight | Predicted: 12 kD; Observed: 13 kD |
| Form/Buffer | Liquid in 0.42% Potassium phosphate, 0.87% Sodium chloride, pH 7.3, 30% glycerol, and 0.01% sodium azide. |
| Alternative Names | RBX2; ROC2; SAG; RING-box protein 2; Rbx2; CKII beta-binding protein 1; CKBBP1; RING finger protein 7; Regulator of cullins 2; Sensitive to apoptosis gene protein |
| Gene Symbol | RNF7 |
| Entrez Gene | 9616(Human); 19823(Mouse) |
| SwissProt | Q9UBF6(Human); Q9WTZ1(Mouse) |

*AREX continuously optimizes our products. Webpage content may not reflect the latest updates. For inquiries, please contact info@arex.bio or your local distributor.

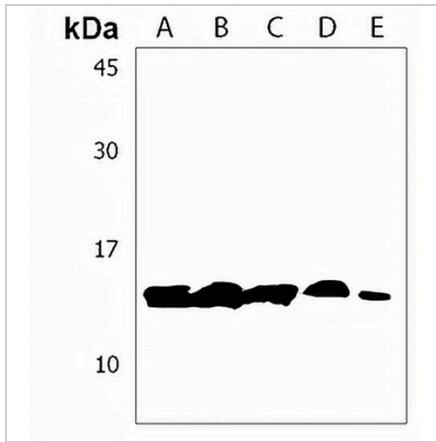
*Clone Number, Reactivity, Source/Host and Clonality can be found in the product name and Key Features section above.

DATASHEET

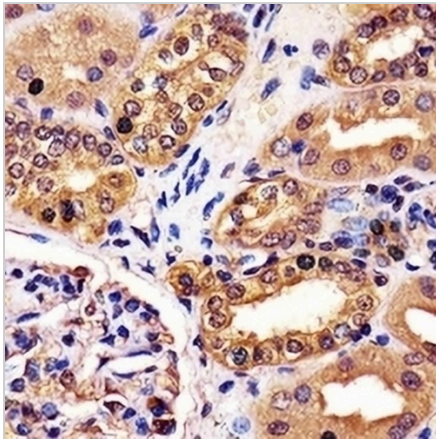
RNF7 Rabbit Polyclonal Antibody

CAT. NO. APA19166

DATA



Western blot analysis of RNF7 expression in human heart (A), human liver (B), human skeletal muscle (C), human testis (D), mouse heart (E) whole cell lysates. (Predicted band size: 12 kD; Observed band size: 13 kD)



Immunohistochemical analysis of RNF7 staining in human kidney formalin fixed paraffin embedded tissue section. The section was pre-treated using heat mediated antigen retrieval with sodium citrate buffer (pH 6.0). The section was then incubated with the antibody at room temperature and detected using an HRP conjugated compact polymer system. DAB was used as the chromogen. The section was then counterstained with haematoxylin and mounted with DPX.

STORAGE

Store at 4°C short term. For long term storage, store at -20°C, avoiding freeze/thaw cycles.

NOTE

For Research Use Only. Not for diagnostic, therapeutics, prophylactic or in vivo use.